

# MIDN antibody



Catalog Number: 112615

## Product name

MIDN antibody

Polyclonal

## Ig Type

Rabbit IgG

## Specificity

Human, Mouse, Rat; other species not tested.

## Applications

ELISA, WB

## Antibody description

MIDN Rabbit Polyclonal antibody. Positive WB detected in BxPC-3 cells. Observed molecular weight by Western-blot: 45-50 kDa

## Dilutions

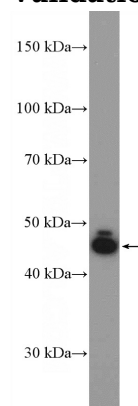
Recommended Dilution:

WB: 1:200-1:1000

## Preparation

This antibody was obtained by immunization of MIDN recombinant protein (Accession Number: NM\_177401). Purification method: Antigen affinity purified.

## Validations



## Formulation

PBS with 0.1% sodium azide and 50% glycerol pH 7.3.

BxPC-3 cells were subjected to SDS PAGE followed by western blot with Catalog No:112615(MIDN Antibody) at dilution of 1:300

## Storage

Store at -20°C. DO NOT ALIQUOT

## Clonality