

mGluR1 antibody



Catalog Number: 112600

Product name

mGluR1 antibody

Specificity

Human, Mouse; other species not tested.

Antibody description

mGluR1 Rabbit Polyclonal antibody. Positive WB detected in human brain tissue, mouse brain tissue. Positive IHC detected in mouse brain tissue. Observed molecular weight by Western-blot: 54 kDa, 102 kDa

Preparation

This antibody was obtained by immunization of Peptide (Accession Number: NM_000838). Purification method: Antigen affinity purified.

Formulation

PBS with 0.02% sodium azide and 50% glycerol pH 7.3.

Storage

Store at -20°C. DO NOT ALIQUOT

Clonality

Polyclonal

Ig Type

Rabbit IgG

Applications

ELISA, WB, IHC

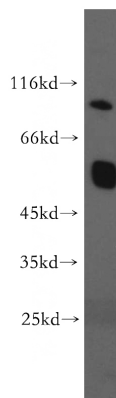
Dilutions

Recommended Dilution:

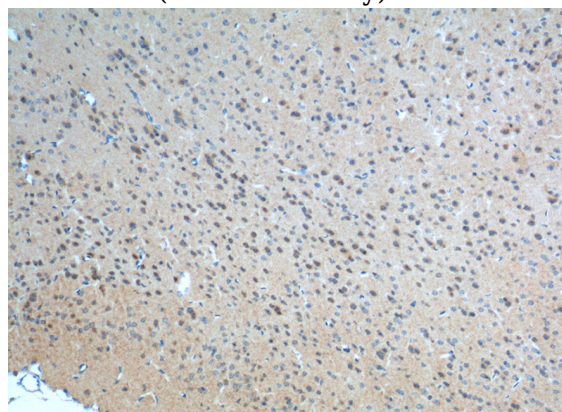
WB: 1:200-1:1000

IHC: 1:50-1:500

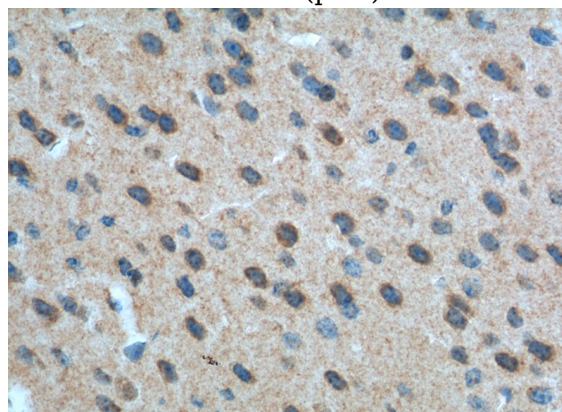
Validations



human brain tissue were subjected to SDS PAGE followed by western blot with Catalog No:112600(GRM1 antibody) at dilution of 1:300



Immunohistochemistry of paraffin-embedded mouse brain tissue slide using Catalog No:112600(GRM1 Antibody) at dilution of 1:200 (under 10x lens). heat mediated antigen retrieved with Tris-EDTA buffer(pH9).



Immunohistochemistry of paraffin-embedded mouse brain tissue slide using Catalog No:112600(GRM1 Antibody) at dilution of 1:200

mGluR1 antibody



Catalog Number: 112600

(under 40x lens). heat mediated antigen retrieved with Tris-EDTA buffer(pH9).