

MED26 antibody

Catalog Number: 112588

Product name

MED26 antibody

Specificity

Human,Mouse,Rat; other species not tested.

Antibody description

MED26 Rabbit Polyclonal antibody. Positive WB detected in mouse ovary tissue, HEK-293 cells. Observed molecular weight by Western-blot: 66-70 kDa

Preparation

This antibody was obtained by immunization of MED26 recombinant protein (Accession Number: NM_004831). Purification method: Antigen affinity purified.

Formulation

PBS with 0.02% sodium azide and 50% glycerol pH 7.3.

Storage

Store at -20°C. DO NOT ALIQUOT

Clonality

Polyclonal

Ig Type

Rabbit IgG

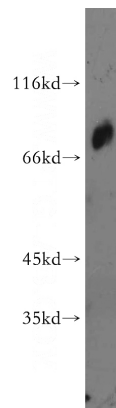
Applications

ELISA, WB

Dilutions

Recommended Dilution:

WB: 1:500-1:5000

Validations

mouse ovary tissue were subjected to SDS PAGE followed by western blot with Catalog No:112588(MED26 antibody) at dilution of 1:500