

# MED15 antibody



Catalog Number: 112584

## Product name

MED15 antibody

IP: 1:200-1:2000

IHC: 1:20-1:200

## Specificity

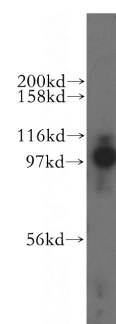
Human; other species not tested.

IF: 1:20-1:200

## Validations

## Antibody description

MED15 Rabbit Polyclonal antibody. Positive WB detected in K-562 cells. Positive IP detected in K-562 cells. Positive IHC detected in human prostate cancer tissue. Positive IF detected in SH-SY5Y cells. Observed molecular weight by Western-blot: 105 kDa



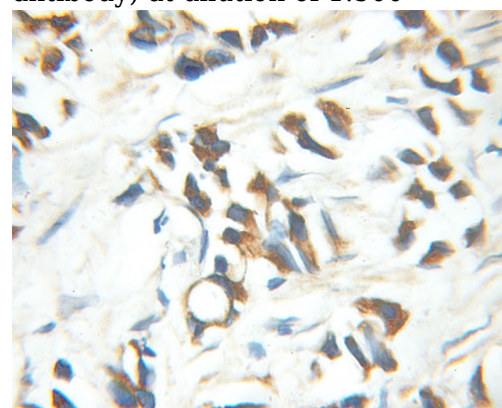
## Preparation

This antibody was obtained by immunization of MED15 recombinant protein (Accession Number: BC017110). Purification method: Antigen affinity purified.

K-562 cells were subjected to SDS PAGE followed by western blot with Catalog No:112584(MED15 antibody) at dilution of 1:500

## Formulation

PBS with 0.1% sodium azide and 50% glycerol pH 7.3.



## Storage

Store at -20°C. DO NOT ALIQUOT

## Clonality

Polyclonal

## Ig Type

Rabbit IgG

## Applications

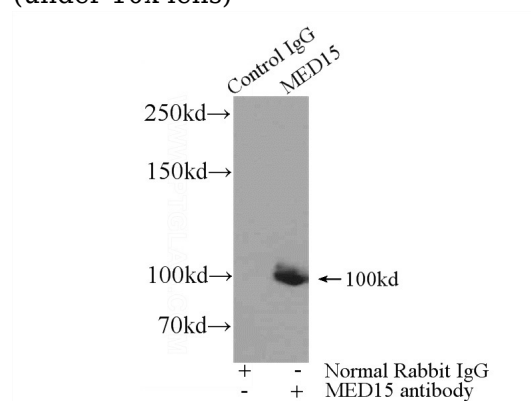
ELISA, WB, IHC, IP, IF

## Dilutions

Recommended Dilution:

WB: 1:500-1:5000

Immunohistochemical of paraffin-embedded human prostate cancer using Catalog No:112584(MED15 antibody) at dilution of 1:100 (under 10x lens)



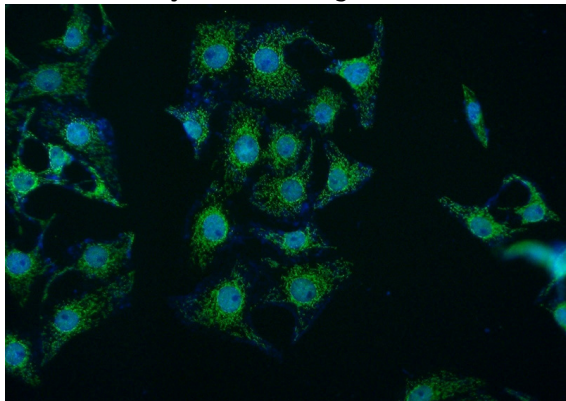
# MED15 antibody



Catalog Number: 112584

---

IP Result of anti-MED15 (IP:Catalog No:112584, 3ug; Detection:Catalog No:112584 1:500) with K-562 cells lysate 3440ug.



Immunofluorescent analysis of SH-SY5Y cells using Catalog No:112584(MED15 Antibody) at dilution of 1:50 and Alexa Fluor 488-conjugated AffiniPure Goat Anti-Rabbit IgG(H+L)