

ME1 antibody

Catalog Number: 112574

Product name

ME1 antibody

IP: 1:200-1:2000

IHC: 1:20-1:200

Specificity

Human, Mouse, Rat; other species not tested.

Antibody description

ME1 Rabbit Polyclonal antibody. Positive IHC detected in human liver tissue, human placenta tissue. Positive WB detected in mouse liver tissue, mouse placenta tissue. Positive IP detected in mouse liver tissue. Observed molecular weight by Western-blot: 55-64kd

Preparation

This antibody was obtained by immunization of ME1 recombinant protein (Accession Number: NM_002395). Purification method: Antigen affinity purified.

Formulation

PBS with 0.02% sodium azide and 50% glycerol pH 7.3.

Storage

Store at -20°C. DO NOT ALIQUOT

Clonality

Polyclonal

Ig Type

Rabbit IgG

Applications

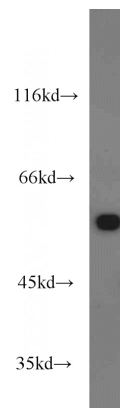
ELISA, WB, IHC, IP

Dilutions

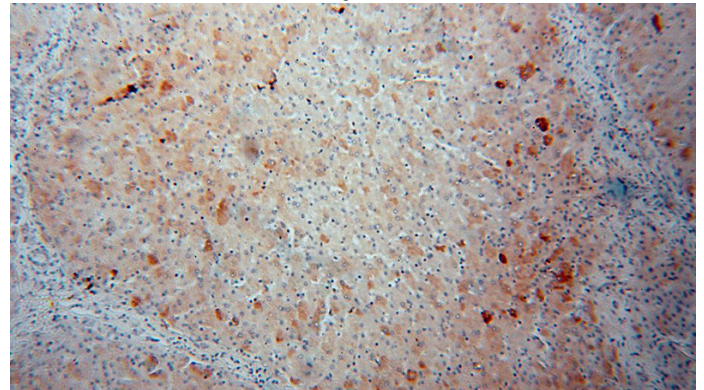
Recommended Dilution:

WB: 1:500-1:5000

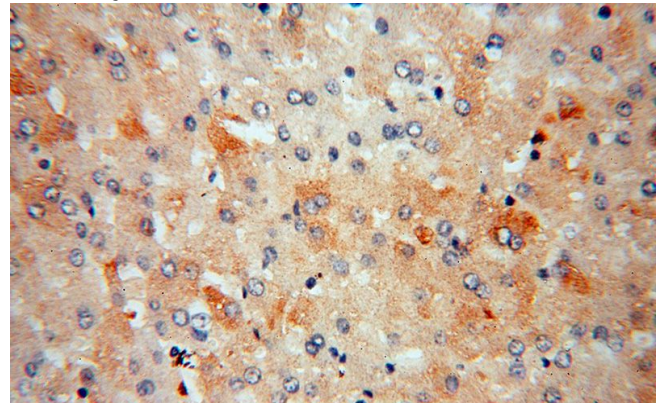
Validations



mouse liver tissue were subjected to SDS PAGE followed by western blot with Catalog No:112574(ME1 antibody) at dilution of 1:2000



Immunohistochemical of paraffin-embedded human liver using Catalog No:112574(ME1 antibody) at dilution of 1:100 (under 10x lens)

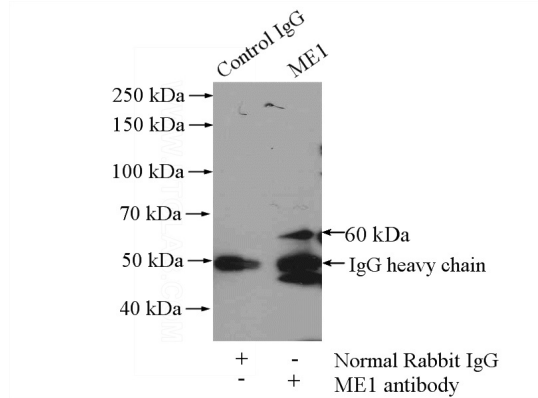


Immunohistochemical of paraffin-embedded human liver using Catalog No:112574(ME1

ME1 antibody

Catalog Number: 112574

antibody) at dilution of 1:100 (under 40x lens)



IP Result of anti-ME1 (IP:Catalog No:112574, 4ug; Detection:Catalog No:112574 1:500) with mouse liver tissue lysate 4000ug.