

MDM2 antibody



Catalog Number: 112572

Product name

Polyclonal

MDM2 antibody

Ig Type

Specificity

Rabbit IgG

Human, Mouse, Rat; other species not tested.

Applications

Antibody description

ELISA, WB

MDM2 Rabbit Polyclonal antibody. Positive WB detected in A431 cells, A549 cells, MCF-7 cells. Observed molecular weight by Western-blot: 30-55 kDa

Dilutions

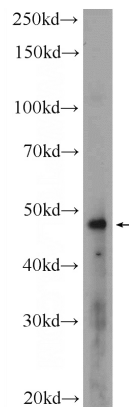
Recommended Dilution:

WB: 1:200-1:1000

Preparation

This antibody was obtained by immunization of Peptide (Accession Number: NM_002392). Purification method: Antigen affinity purified.

Validations



Formulation

PBS with 0.1% sodium azide and 50% glycerol pH 7.3.

A431 cells were subjected to SDS PAGE followed by western blot with Catalog No:112572(MDM2 Antibody) at dilution of 1:300

Storage

Store at -20°C. DO NOT ALIQUOT

Clonality