

MDH2 antibody

Catalog Number: 112569

Product name

MDH2 antibody

Specificity

Human, Mouse, Rat; other species not tested.

Antibody description

MDH2 Rabbit Polyclonal antibody. Positive IP detected in mouse lung tissue. Positive WB detected in mouse lung tissue, rat lung tissue. Observed molecular weight by Western-blot: 33 kDa

Preparation

This antibody was obtained by immunization of MDH2 recombinant protein (Accession Number: NM_005918). Purification method: Antigen affinity purified.

Formulation

PBS with 0.1% sodium azide and 50% glycerol pH 7.3.

Storage

Store at -20°C. DO NOT ALIQUOT

Clonality

Polyclonal

Ig Type

Rabbit IgG

Applications

ELISA, WB, IP

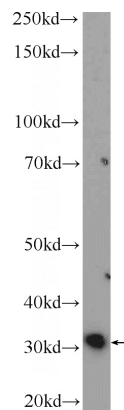
Dilutions

Recommended Dilution:

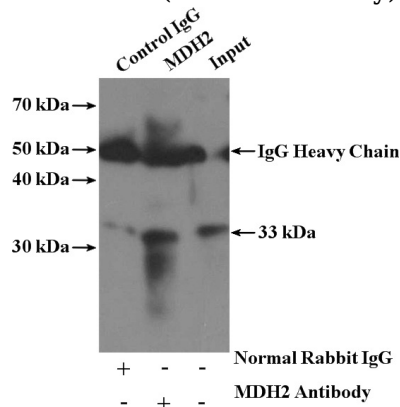
WB: 1:200-1:1000

IP: 1:200-1:1000

Validations



mouse lung tissue were subjected to SDS PAGE followed by western blot with Catalog No:112569(MDH2 Antibody) at dilution of 1:300



IP Result of anti-MDH2 (IP:Catalog No:112569, 4ug; Detection:Catalog No:112569 1:300) with mouse lung tissue lysate 3600ug.