

MCT4 antibody



Catalog Number: 112563

Product name

MCT4 antibody

WB: 1:500-1:5000

IHC: 1:20-1:200

Specificity

Human; other species not tested.

IF: 1:20-1:200

Antibody description

MCT4 Rabbit Polyclonal antibody. Positive WB detected in HeLa cells. Positive FC detected in HepG2 cells. Positive IF detected in HepG2 cells. Positive IHC detected in human breast cancer tissue, human prostate cancer tissue, human skeletal muscle tissue. Observed molecular weight by Western-blot: 42-45 kDa

Preparation

This antibody was obtained by immunization of MCT4 recombinant protein (Accession Number: NM_001206951). Purification method: Antigen affinity purified.

Formulation

PBS with 0.02% sodium azide and 50% glycerol pH 7.3.

Storage

Store at -20°C. DO NOT ALIQUOT

Clonality

Polyclonal

Ig Type

Rabbit IgG

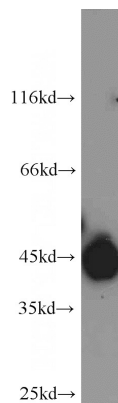
Applications

ELISA, WB, IHC, IF, FC

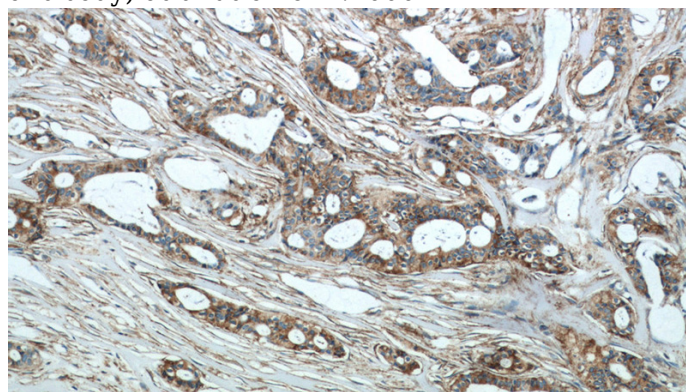
Dilutions

Recommended Dilution:

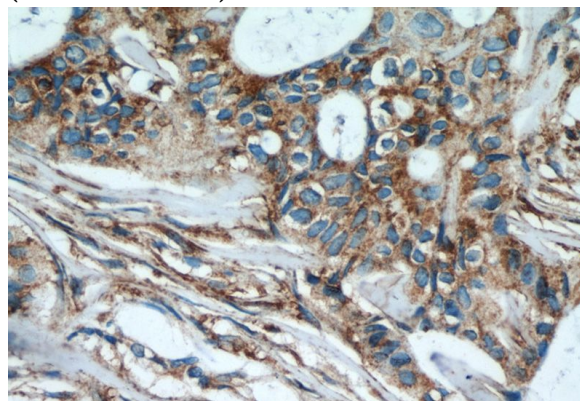
Validations



HeLa cells were subjected to SDS PAGE followed by western blot with Catalog No:112563(SLC16A3 antibody) at dilution of 1:1000



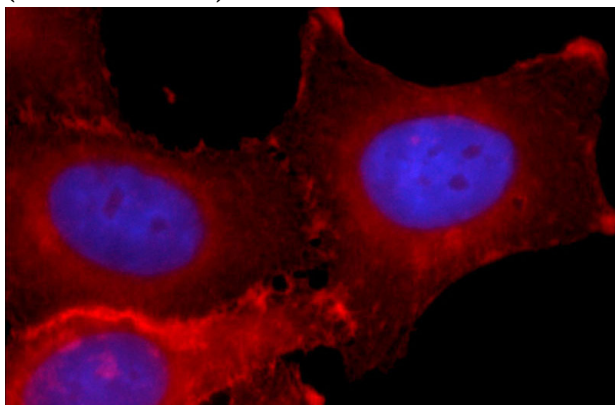
Immunohistochemical of paraffin-embedded human breast cancer using Catalog No:112563(SLC16A3 antibody) at dilution of 1:50 (under 10x lens)



MCT4 antibody

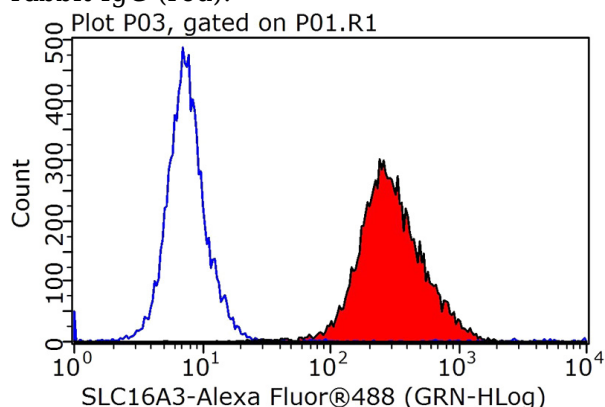
Catalog Number: 112563

Immunohistochemical of paraffin-embedded human breast cancer using Catalog No:112563(SLC16A3 antibody) at dilution of 1:50 (under 40x lens)



Immunofluorescent analysis of HepG2 cells using Catalog No:112563 (SLC16A3 Antibody) at dilution of 1:50 and Rhodamine-labeled goat anti-

rabbit IgG (red).



1×10^6 HepG2 cells were stained with 0.2ug SLC16A3 antibody (Catalog No:112563, red) and control antibody (blue). Fixed with 90% MeOH blocked with 3% BSA (30 min). Alexa Fluor 488-conjugated AffiniPure Goat Anti-Rabbit IgG(H+L) with dilution 1:1000.