

# MCP1 antibody



Catalog Number: 112560

## Product name

MCP1 antibody

## Specificity

Human; other species not tested.

## Antibody description

MCP1 Rabbit Polyclonal antibody. Positive IF detected in HeLa cells. Positive FC detected in A549 cells. Positive WB detected in Transfected HEK-293 cells.

## Preparation

This antibody was obtained by immunization of MCP1 recombinant protein (Accession Number: NM\_002982). Purification method: Antigen affinity purified.

## Formulation

PBS with 0.1% sodium azide and 50% glycerol pH 7.3.

## Storage

Store at -20°C. DO NOT ALIQUOT

## Clonality

Polyclonal

## Ig Type

Rabbit IgG

## Applications

ELISA, WB, IF, FC

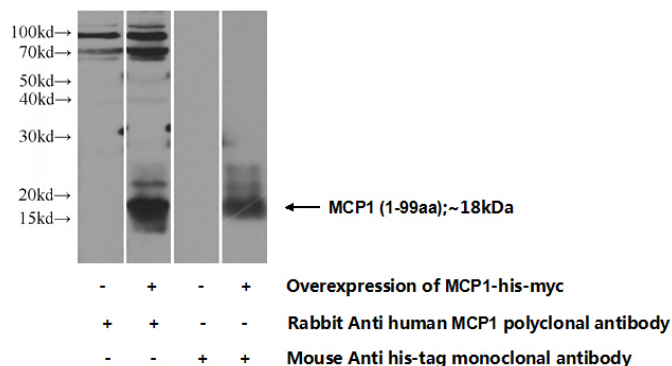
## Dilutions

Recommended Dilution:

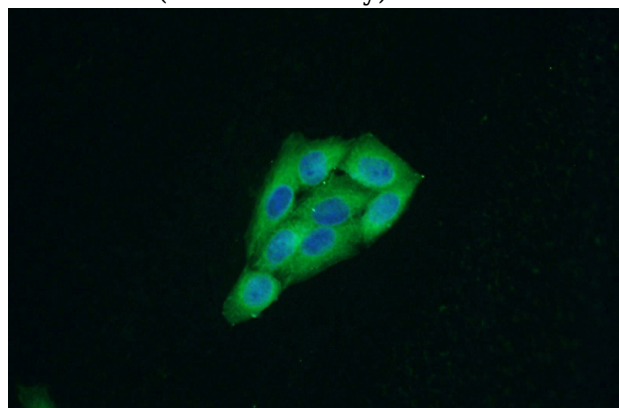
WB: 1:200-1:1000

IF: 1:20-1:200

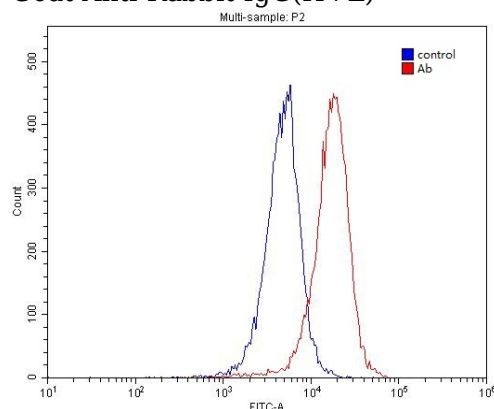
## Validations



Transfected HEK-293 cells were subjected to SDS PAGE followed by western blot with Catalog No:112560(MCP1 Antibody) at dilution of 1:300



Immunofluorescent analysis of HeLa cells using Catalog No:112560(MCP1 Antibody) at dilution of 1:50 and Alexa Fluor 488-conjugated AffiniPure Goat Anti-Rabbit IgG(H+L)



1X10<sup>6</sup> A549 cells were stained with 0.2ug MCP1 antibody (Catalog No:112560, red) and control antibody (blue). Fixed with 4% PFA blocked with 3% BSA (30 min). Alexa Fluor 488-conjugated AffiniPure Goat Anti-Rabbit IgG(H+L) with

# MCP1 antibody



Catalog Number: 112560

---

dilution 1:1500.