

MCM8 antibody

Catalog Number: 112558

Product name

MCM8 antibody

Specificity

Human, Mouse, Rat; other species not tested.

Antibody description

MCM8 Rabbit Polyclonal antibody. Positive IP detected in NIH/3T3 cells. Positive WB detected in NIH/3T3 cells, HEK-293 cells, HeLa cells. Observed molecular weight by Western-blot: 95 kDa

Preparation

This antibody was obtained by immunization of MCM8 recombinant protein (Accession Number: BC008830). Purification method: Antigen affinity purified.

Formulation

PBS with 0.02% sodium azide and 50% glycerol pH 7.3.

Storage

Store at -20°C. DO NOT ALIQUOT

Clonality

Polyclonal

Ig Type

Rabbit IgG

Applications

ELISA, WB, IP

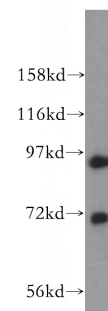
Dilutions

Recommended Dilution:

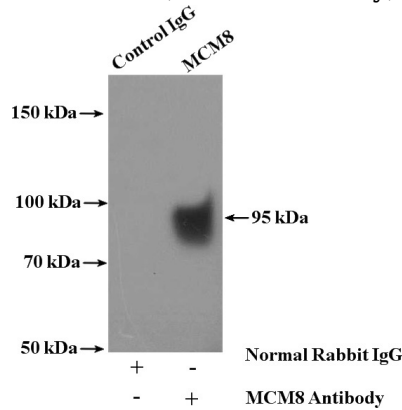
WB: 1:200-1:2000

IP: 1:200-1:1000

Validations



NIH/3T3 cells were subjected to SDS PAGE followed by western blot with Catalog No:112558(MCM8 antibody) at dilution of 1:300



IP Result of anti-MCM8 (IP:Catalog No:112558, 4ug; Detection:Catalog No:112558 1:300) with NIH/3T3 cells lysate 4000ug.