

MCM10 antibody



Catalog Number: 112551

Product name

MCM10 antibody

Specificity

Human, Mouse; other species not tested.

Antibody description

MCM10 Rabbit Polyclonal antibody. Positive WB detected in HepG2 cells. Positive IF detected in HepG2 cells. Observed molecular weight by Western-blot: 97-105 kDa

Preparation

This antibody was obtained by immunization of MCM10 recombinant protein (Accession Number: BC009108). Purification method: Antigen affinity purified.

Formulation

PBS with 0.1% sodium azide and 50% glycerol pH 7.3.

Storage

Store at -20°C. DO NOT ALIQUOT

Clonality

Polyclonal

Ig Type

Rabbit IgG

Applications

ELISA, WB, IF

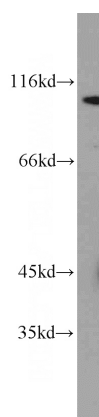
Dilutions

Recommended Dilution:

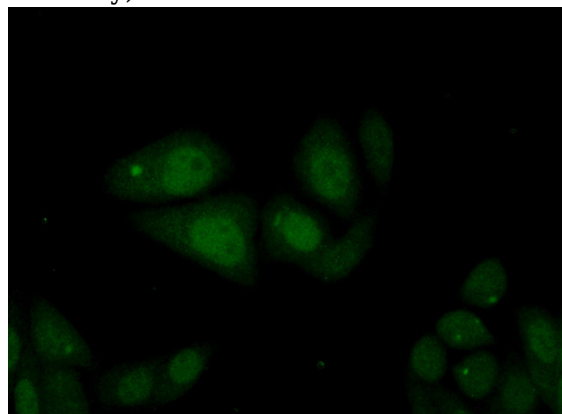
WB: 1:200-1:2000

IF: 1:50-1:500

Validations



HepG2 cells were subjected to SDS PAGE followed by western blot with Catalog No:112551(MCM10 antibody) at dilution of 1:300



Immunofluorescent analysis of (10% Formaldehyde) fixed HepG2 cells using Catalog No:112551(MCM10 Antibody) at dilution of 1:50 and Alexa Fluor 488-conjugated AffiniPure Goat Anti-Rabbit IgG(H+L)