

# MCL1 antibody



Catalog Number: 112549

## Product name

MCL1 antibody

Recommended Dilution:

WB: 1:500-1:5000

## Specificity

Human, Mouse, Rat; other species not tested.

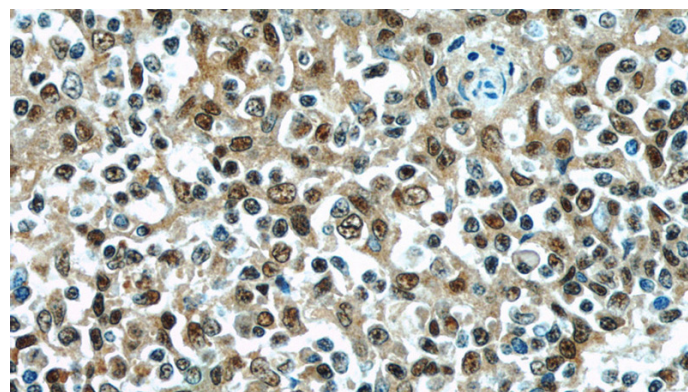
IP: 1:500-1:5000

IHC: 1:20-1:200

## Antibody description

MCL1 Rabbit Polyclonal antibody. Positive IHC detected in human tonsillitis tissue, human cervical cancer tissue, human lung cancer tissue, human pancreas tissue. Positive IP detected in Raji cells. Positive WB detected in Raji cells, A431 cells, HeLa cells, HL-60 cells, human brain tissue, human liver tissue, Jurkat cells, K-562 cells, mouse spleen tissue. Observed molecular weight by Western-blot: 40 kDa

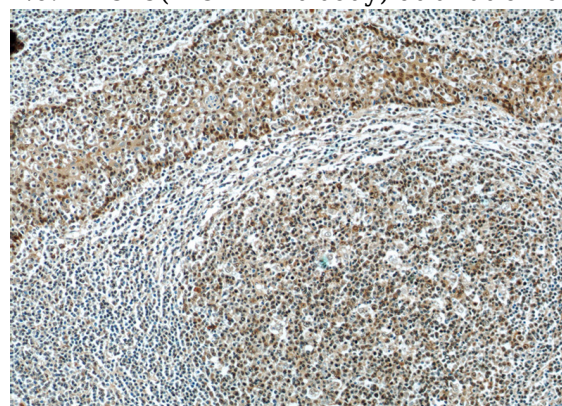
## Validations



## Preparation

This antibody was obtained by immunization of MCL1 recombinant protein (Accession Number: NM\_021960). Purification method: Antigen affinity purified.

Immunohistochemistry of paraffin-embedded human tonsillitis slide using Catalog No:112549(MCL1 Antibody) at dilution of 1:50



## Formulation

PBS with 0.02% sodium azide and 50% glycerol pH 7.3.

## Storage

Store at -20°C. DO NOT ALIQUOT

## Clonality

Polyclonal

Immunohistochemistry of paraffin-embedded human tonsillitis slide using Catalog No:112549(MCL1 Antibody) at dilution of 1:50

## Ig Type

Rabbit IgG

## Applications

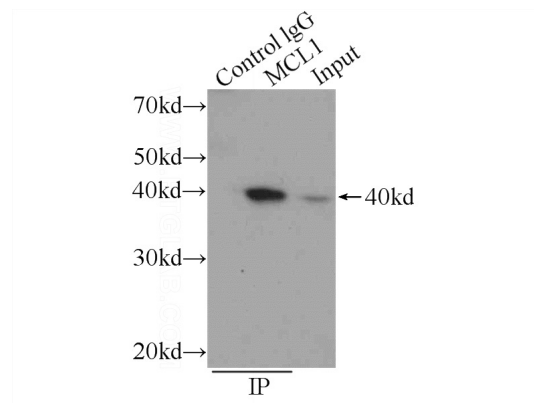
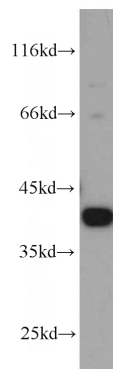
ELISA, IHC, WB, IP

## Dilutions

# MCL1 antibody



Catalog Number: 112549



Raji cells were subjected to SDS PAGE followed by western blot with Catalog No:112549(MCL1 antibody) at dilution of 1:1000

IP Result of anti-MCL1 (IP:Catalog No:112549, 3ug; Detection:Catalog No:112549 1:1000) with Raji cells lysate 800ug.