

# MCCC1 antibody

Catalog Number: 112543

## Product name

MCCC1 antibody

IP: 1:500-1:5000

IHC: 1:20-1:200

## Specificity

Human, Mouse, Rat; other species not tested.

## Antibody description

MCCC1 Rabbit Polyclonal antibody. Positive IHC detected in human liver cancer tissue. Positive WB detected in mouse liver tissue, mouse heart tissue. Positive IP detected in mouse liver tissue. Observed molecular weight by Western-blot: 70-76 kDa

## Preparation

This antibody was obtained by immunization of MCCC1 recombinant protein (Accession Number: NM\_020166). Purification method: Antigen affinity purified.

## Formulation

PBS with 0.02% sodium azide and 50% glycerol pH 7.3.

## Storage

Store at -20°C. DO NOT ALIQUOT

## Clonality

Polyclonal

## Ig Type

Rabbit IgG

## Applications

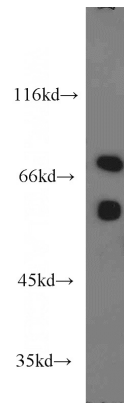
ELISA, WB, IHC, IP

## Dilutions

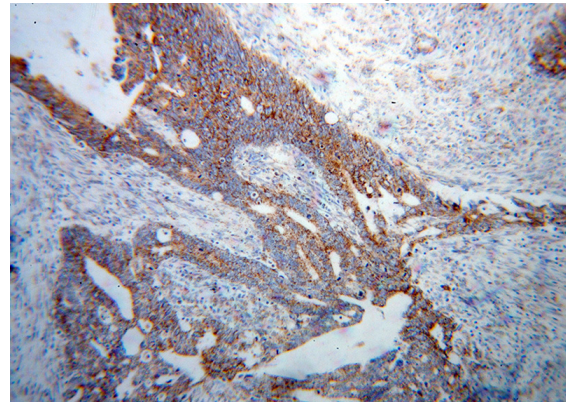
Recommended Dilution:

WB: 1:500-1:5000

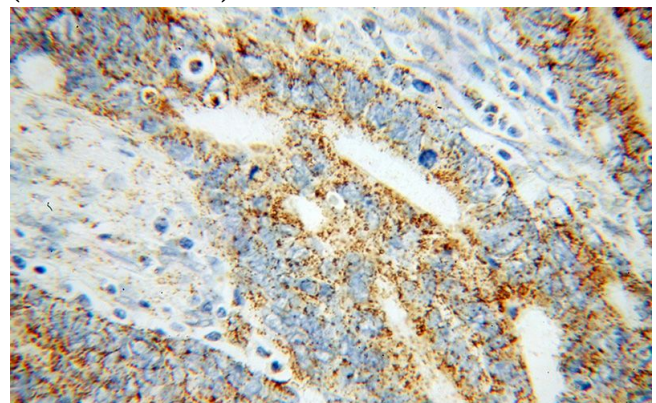
## Validations



mouse liver tissue were subjected to SDS PAGE followed by western blot with Catalog No:112543(MCCC1 antibody) at dilution of 1:1200



Immunohistochemical of paraffin-embedded human liver cancer using Catalog No:112543(MCCC1 antibody) at dilution of 1:100 (under 10x lens)



Immunohistochemical of paraffin-embedded

# MCCC1 antibody

Catalog Number: 112543

---

human liver cancer using Catalog  
No:112543(MCCC1 antibody) at dilution of 1:100

IP Result of anti-MCCC1 (IP:Catalog No:112543,  
4ug; Detection:Catalog No:112543 1:1000) with  
mouse liver tissue lysate 6000ug.

