

MCC antibody



Catalog Number: 112542

Product name

MCC antibody

WB: 1:200-1:2000

IP: 1:200-1:2000

Specificity

Human, Mouse; other species not tested.

IHC: 1:20-1:200

IF: 1:10-1:100

Antibody description

MCC Rabbit Polyclonal antibody. Positive IHC detected in human prostate cancer tissue. Positive IF detected in PC-3 cells. Positive IP detected in PC-3 cells. Positive WB detected in human brain tissue, COLO 320 cells, mouse liver tissue, PC-3 cells. Observed molecular weight by Western-blot: 98 kDa; 113-118 kDa

Preparation

This antibody was obtained by immunization of MCC recombinant protein (Accession Number: NM_002387). Purification method: Antigen affinity purified.

Formulation

PBS with 0.1% sodium azide and 50% glycerol pH 7.3.

Storage

Store at -20°C. DO NOT ALIQUOT

Clonality

Polyclonal

Ig Type

Rabbit IgG

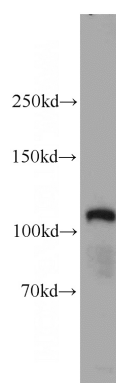
Applications

ELISA, IHC, IP, WB, IF

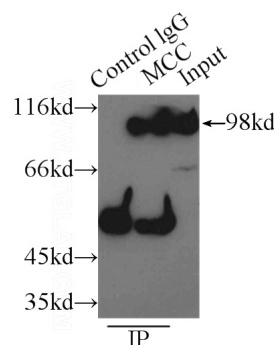
Dilutions

Recommended Dilution:

Validations



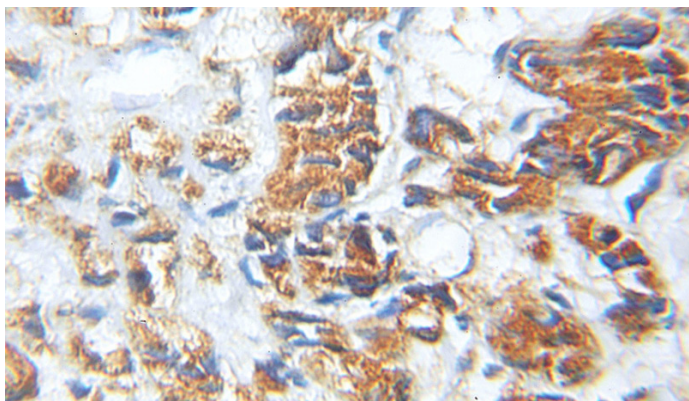
human brain tissue were subjected to SDS PAGE followed by western blot with Catalog No:112542(MCC antibody) at dilution of 1:500



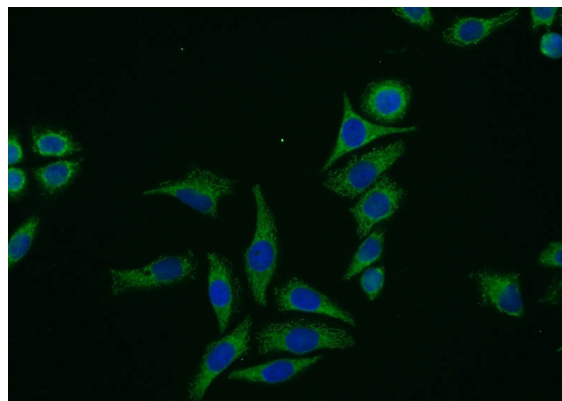
IP Result of anti-MCC (IP:Catalog No:112542, 3ug; Detection:Catalog No:112542 1:500) with PC-3 cells lysate 5000ug.

MCC antibody

Catalog Number: 112542



Immunohistochemical of paraffin-embedded human prostate cancer using Catalog No:112542(MCC antibody) at dilution of 1:100 (under 10x lens)



Immunofluorescent analysis of PC-3 cells using Catalog No:112542(MCC Antibody) at dilution of 1:25 and Alexa Fluor 488-conjugated AffiniPure Goat Anti-Rabbit IgG(H+L)