

# MGAT1 antibody

Catalog Number: 112535

## Product name

MGAT1 antibody

IHC: 1:20-1:200

IF: 1:10-1:100

## Specificity

Human, Mouse, Rat; other species not tested.

## Antibody description

MGAT1 Rabbit Polyclonal antibody. Positive WB detected in Y79 cells, HepG2 cells. Positive IHC detected in human liver cancer tissue, human heart tissue, mouse heart tissue, mouse liver tissue. Positive IF detected in Hela cells. Observed molecular weight by Western-blot: 51-55 kDa

## Preparation

This antibody was obtained by immunization of MGAT1 recombinant protein (Accession Number: XM\_005265916). Purification method: Antigen affinity purified.

## Formulation

PBS with 0.02% sodium azide and 50% glycerol pH 7.3.

## Storage

Store at -20°C. DO NOT ALIQUOT

## Clonality

Polyclonal

## Ig Type

Rabbit IgG

## Applications

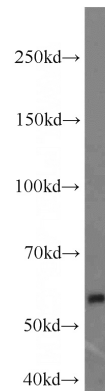
ELISA, WB, IHC, IF

## Dilutions

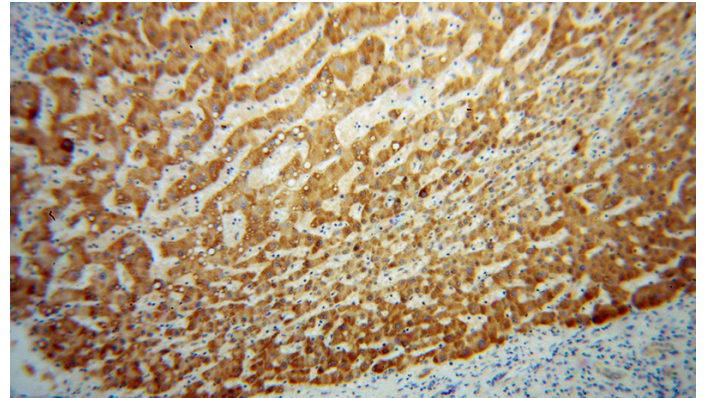
Recommended Dilution:

WB: 1:500-1:5000

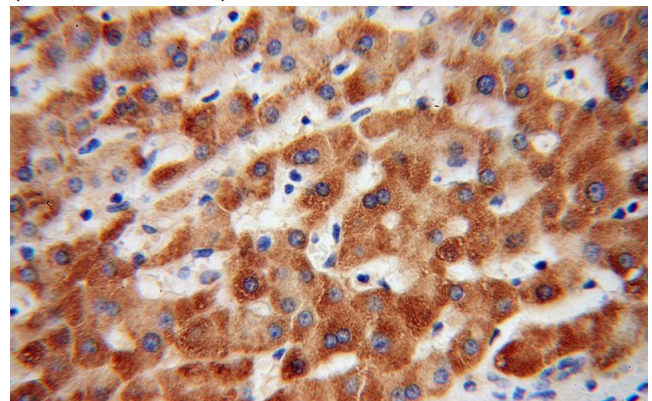
## Validations



Y79 cells were subjected to SDS PAGE followed by western blot with Catalog No:112535(MGAT1 antibody) at dilution of 1:1000



Immunohistochemical of paraffin-embedded human liver cancer using Catalog No:112535(MGAT1 antibody) at dilution of 1:100 (under 10x lens)



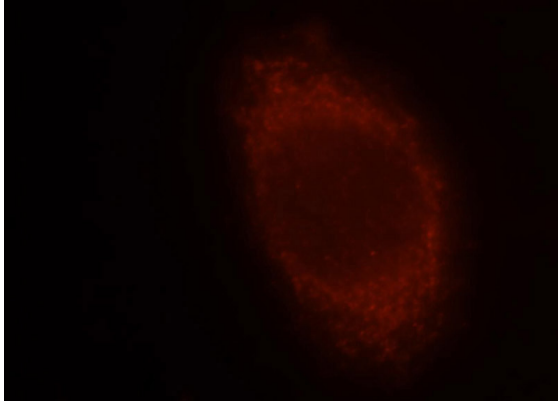
Immunohistochemical of paraffin-embedded

# MGAT1 antibody

Catalog Number: 112535

---

human liver cancer using Catalog  
No:112535(MGAT1 antibody) at dilution of 1:100  
(under 40x lens)



Immunofluorescent analysis of Hela cells, using  
MGAT1 antibody Catalog No:112535 at 1:25  
dilution and Rhodamine-labeled goat anti-rabbit  
IgG (red).