

MFI2 antibody



Catalog Number: 112528

Product name

Polyclonal

MFI2 antibody

Ig Type

Specificity

Rabbit IgG

Human, Mouse, Rat; other species not tested.

Applications

Antibody description

ELISA, WB

MFI2 Rabbit Polyclonal antibody. Positive WB detected in HEK-293 cells, HeLa cells, Transfected HEK-293 cells. Observed molecular weight by Western-blot: 82 kDa

Dilutions

Recommended Dilution:

WB: 1:200-1:1000

Preparation

This antibody was obtained by immunization of MFI2 recombinant protein (Accession Number: NM_033316). Purification method: Antigen affinity purified.

Validations

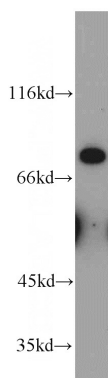
Formulation

PBS with 0.1% sodium azide and 50% glycerol pH 7.3.

Storage

Store at -20°C. DO NOT ALIQUOT

Clonality



HEK-293 cells were subjected to SDS PAGE followed by western blot with Catalog No:112528(MFI2 antibody) at dilution of 1:100