

METTL5 antibody



Catalog Number: 112520

Product name

METTL5 antibody

IHC: 1:20-1:200

IF: 1:10-1:100

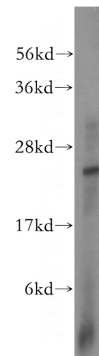
Specificity

Human, Mouse, Rat; other species not tested.

Antibody description

METTL5 Rabbit Polyclonal antibody. Positive WB detected in PC-3 cells, HepG2 cells, human brain tissue. Positive IF detected in HepG2 cells. Positive IHC detected in human brain tissue. Observed molecular weight by Western-blot: 24kd

Validations



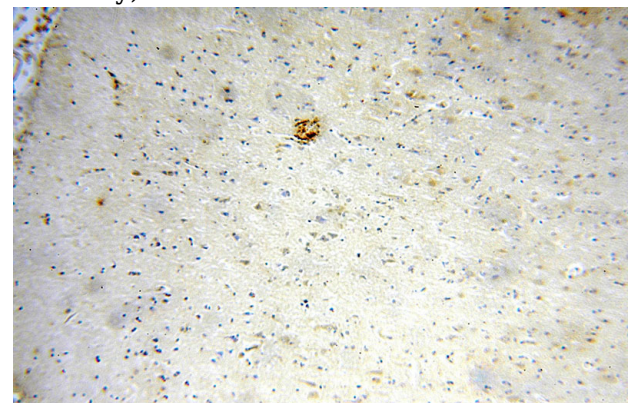
Preparation

This antibody was obtained by immunization of METTL5 recombinant protein (Accession Number: NM_001293186). Purification method: Antigen affinity purified.

PC-3 cells were subjected to SDS PAGE followed by western blot with Catalog No:112520(METTL5 antibody) at dilution of 1:800

Formulation

PBS with 0.02% sodium azide and 50% glycerol pH 7.3.



Storage

Store at -20°C. DO NOT ALIQUOT

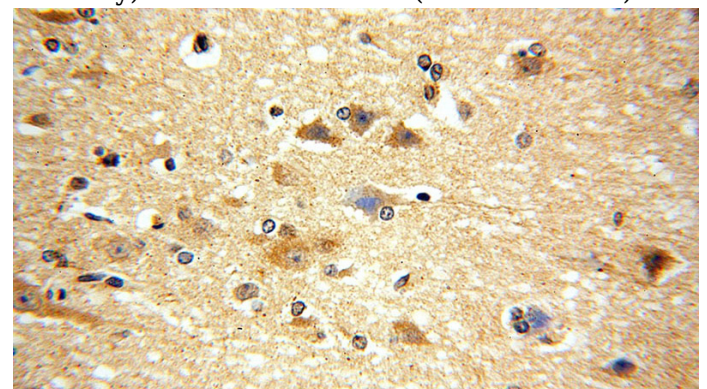
Clonality

Polyclonal

Immunohistochemical of paraffin-embedded human brain using Catalog No:112520(METTL5 antibody) at dilution of 1:100 (under 10x lens)

Ig Type

Rabbit IgG



Applications

ELISA, WB, IHC, IF

Dilutions

Recommended Dilution:

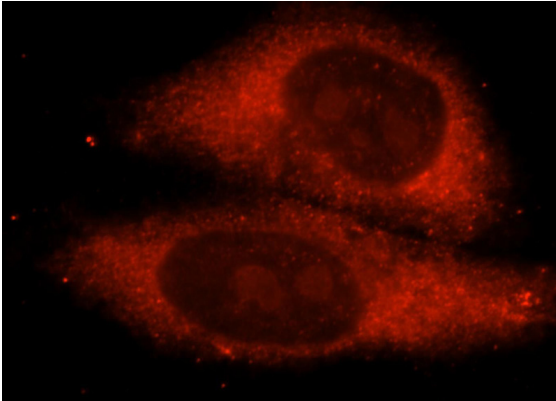
WB: 1:500-1:5000

Immunohistochemical of paraffin-embedded human brain using Catalog No:112520(METTL5 antibody) at dilution of 1:100 (under 10x lens)

METTL5 antibody

Catalog Number: 112520

antibody) at dilution of 1:100 (under 40x lens)



Immunofluorescent analysis of HepG2 cells, using METTL5 antibody Catalog No:112520 at 1:25 dilution and Rhodamine-labeled goat anti-rabbit IgG (red).