

METTL3 antibody



Catalog Number: 112518

Product name

METTL3 antibody

Immunogen

[Human METTL3 Recombinant protein \(His tag\)](#)

Specificity

Human, Mouse, Rat; other species not tested.

Antibody description

METTL3 Rabbit Polyclonal antibody. Positive IP detected in HEK-293 cells. Positive WB detected in HEK-293 cells, HeLa cells, HepG2 cells. Observed molecular weight by Western-blot: 70 kDa

Preparation

This antibody was obtained by immunization of METTL3 recombinant protein (Accession Number: NM_019852). Purification method: Antigen affinity purified.

Formulation

PBS with 0.02% sodium azide and 50% glycerol pH 7.3.

Storage

Store at -20°C. DO NOT ALIQUOT

Clonality

Polyclonal

Ig Type

Rabbit IgG

Applications

ELISA, WB, IP

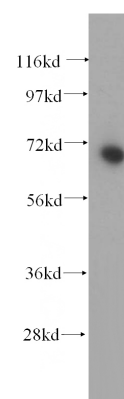
Dilutions

Recommended Dilution:

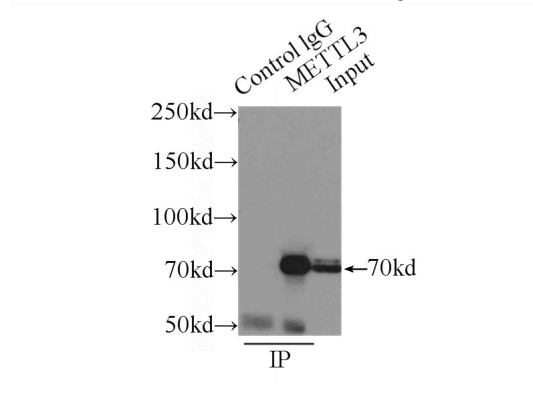
WB: 1:500-1:5000

IP: 1:500-1:5000

Validations



HEK-293 cells were subjected to SDS PAGE followed by western blot with Catalog No:112518(METTL3 antibody) at dilution of 1:400



IP Result of anti-METTL3 (IP:Catalog No:112518, 4ug; Detection:Catalog No:112518 1:1000) with HEK-293 cells lysate 4500ug.