

MET antibody

Catalog Number: 112513

Product name

MET antibody

IP: 1:200-1:1000

IHC: 1:20-1:200

Specificity

Human; other species not tested.

Antibody description

MET Rabbit Polyclonal antibody. Positive WB detected in A431 cells. Positive IP detected in HeLa cells. Positive IHC detected in human breast cancer tissue, human colon tissue, human liver cancer tissue. Observed molecular weight by Western-blot: 145 kDa

Preparation

This antibody was obtained by immunization of MET recombinant protein (Accession Number: NM_000245). Purification method: Antigen affinity purified.

Formulation

PBS with 0.1% sodium azide and 50% glycerol pH 7.3.

Storage

Store at -20°C. DO NOT ALIQUOT

Clonality

Polyclonal

Ig Type

Rabbit IgG

Applications

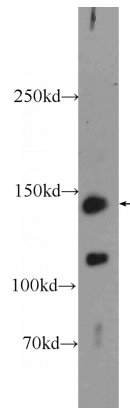
ELISA, IHC, WB, IP

Dilutions

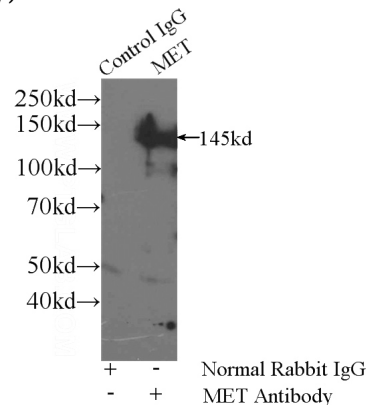
Recommended Dilution:

WB: 1:200-1:1000

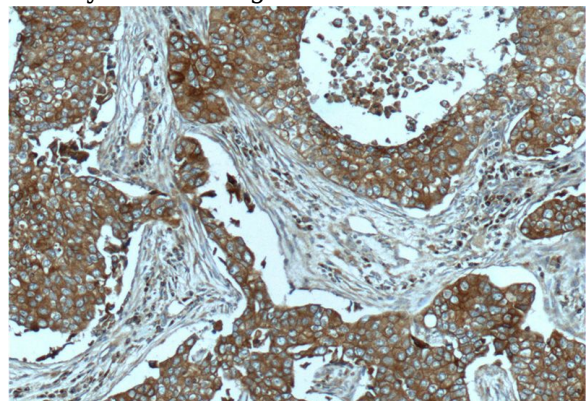
Validations



A431 cells were subjected to SDS PAGE followed by western blot with Catalog No:112513(MET Antibody) at dilution of 1:300



IP Result of anti-MET (IP:Catalog No:112513, 5ug; Detection:Catalog No:112513 1:300) with HeLa cells lysate 1600ug.

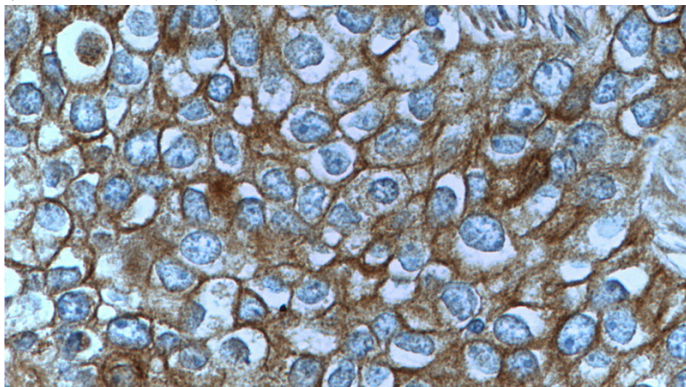


Immunohistochemistry of paraffin-embedded human breast cancer tissue slide using Catalog

MET antibody

Catalog Number: 112513

No:112513(MET Antibody) at dilution of 1:50
(under 10x lens)



Immunohistochemistry of paraffin-embedded
human breast cancer tissue slide using Catalog
No:112513(MET Antibody) at dilution of 1:50
(under 40x lens)