

# MEST antibody

Catalog Number: 112512

## Product name

MEST antibody

IP: 1:200-1:2000

IHC: 1:20-1:200

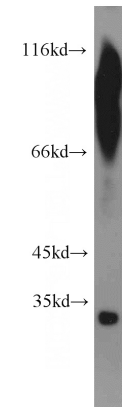
## Specificity

Human, Mouse, Rat; other species not tested.

## Validations

## Antibody description

MEST Rabbit Polyclonal antibody. Positive IHC detected in human pancreas cancer tissue. Positive WB detected in human testis tissue, mouse testis tissue, PC-3 cells. Positive IP detected in PC-3 cells. Observed molecular weight by Western-blot: 34kd



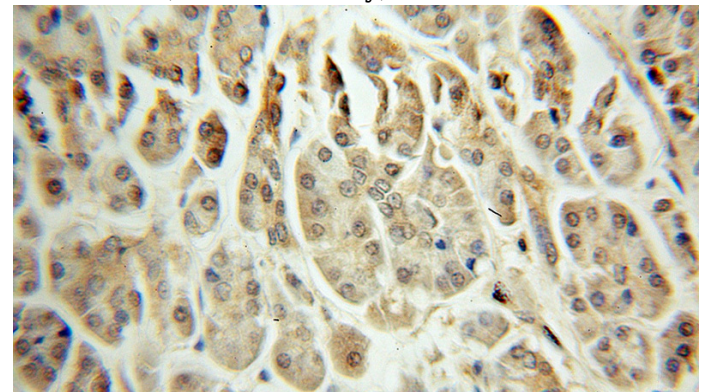
## Preparation

This antibody was obtained by immunization of MEST recombinant protein (Accession Number: NM\_002402). Purification method: Antigen affinity purified.

human testis tissue were subjected to SDS PAGE followed by western blot with Catalog No:112512(MEST antibody) at dilution of 1:500

## Formulation

PBS with 0.1% sodium azide and 50% glycerol pH 7.3.



## Storage

Store at -20°C. DO NOT ALIQUOT

## Clonality

Polyclonal

Immunohistochemical of paraffin-embedded human pancreas cancer using Catalog No:112512(MEST antibody) at dilution of 1:100 (under 10x lens)

## Ig Type

Rabbit IgG

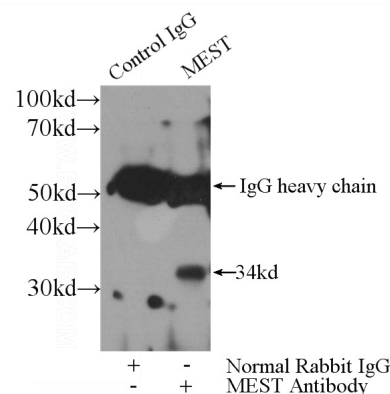
## Applications

ELISA, WB, IHC, IP

## Dilutions

Recommended Dilution:

WB: 1:200-1:2000



IP Result of anti-MEST (IP:Catalog No:112512,

# MEST antibody



Catalog Number: 112512

---

3ug; Detection:Catalog No:112512 1:500) with PC-3 cells lysate 1720ug.