

MESDC2 antibody



Catalog Number: 112510

Product name

MESDC2 antibody

Specificity

human; other species not tested.

Antibody description

MESDC2 Rabbit Polyclonal antibody. Positive WB detected in HEK-293 cells. Observed molecular weight by Western-blot: 26-28 kDa

Preparation

This antibody was obtained by immunization of MESDC2 recombinant protein (Accession Number: NM_015154). Purification method: Antigen affinity purified.

Formulation

PBS with 0.1% sodium azide and 50% glycerol pH 7.3.

Storage

Store at -20°C. DO NOT ALIQUOT

Clonality

Polyclonal

Ig Type

Rabbit IgG

Applications

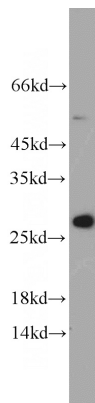
ELISA, WB

Dilutions

Recommended Dilution:

WB: 1:200-1:2000

Validations



HEK-293 cells were subjected to SDS PAGE followed by western blot with Catalog No:112510(MESDC2 antibody) at dilution of 1:200