

# MAX antibody

Catalog Number: 112500

## Product name

MAX antibody

IP: 1:200-1:1000

IF: 1:10-1:100

## Specificity

Human, Mouse, Rat; other species not tested.

## Antibody description

MAX Rabbit Polyclonal antibody. Positive IF detected in PC-3 cells. Positive IP detected in HEK-293 cells. Positive WB detected in HEK-293 cells, A549 cells, PC-3 cells. Observed molecular weight by Western-blot: 22 kDa

## Preparation

This antibody was obtained by immunization of MAX recombinant protein (Accession Number: NM\_145112). Purification method: Antigen affinity purified.

## Formulation

PBS with 0.1% sodium azide and 50% glycerol pH 7.3.

## Storage

Store at -20°C. DO NOT ALIQUOT

## Clonality

Polyclonal

## Ig Type

Rabbit IgG

## Applications

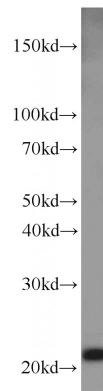
ELISA, WB, IF, IP

## Dilutions

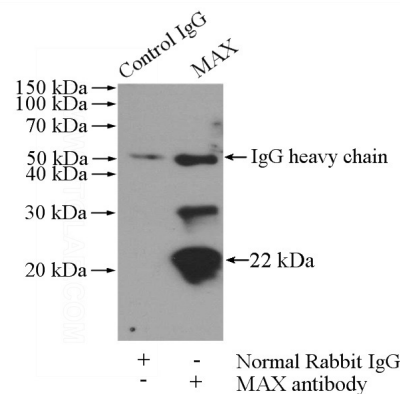
Recommended Dilution:

WB: 1:200-1:1000

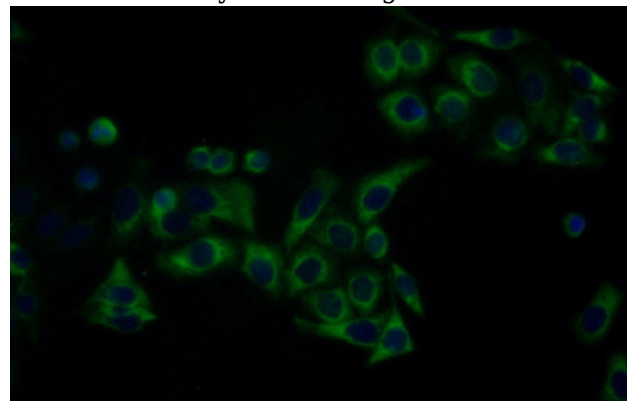
## Validations



HEK-293 cells were subjected to SDS PAGE followed by western blot with Catalog No:112500(MAX antibody) at dilution of 1:300



IP Result of anti-MAX (IP:Catalog No:112500, 4ug; Detection:Catalog No:112500 1:300) with HEK-293 cells lysate 1200ug.



Immunofluorescent analysis of PC-3 cells using Catalog No:112500(MAX Antibody) at dilution of 1:100

# MAX antibody



Catalog Number: 112500

---

1:25 and Alexa Fluor 488-conjugated AffiniPure

Goat Anti-Rabbit IgG(H+L)