

# MAT2B antibody

Catalog Number: 112494

## Product name

MAT2B antibody

## Immunogen

[Human MAT2B Recombinant protein \(His tag\)](#)

## Specificity

Human, Mouse, Rat; other species not tested.

## Antibody description

MAT2B Rabbit Polyclonal antibody. Positive WB detected in HepG2 cells, HEK-293 cells, Jurkat cells, mouse brain tissue, mouse testis tissue. Positive IP detected in HepG2 cells. Positive IF detected in HepG2 cells. Positive IHC detected in human lung tissue, human kidney tissue. Observed molecular weight by Western-blot: 38 kDa

## Preparation

This antibody was obtained by immunization of MAT2B recombinant protein (Accession Number: NM\_182796). Purification method: Antigen affinity purified.

## Formulation

PBS with 0.02% sodium azide and 50% glycerol pH 7.3.

## Storage

Store at -20°C. DO NOT ALIQUOT

## Clonality

Polyclonal

## Ig Type

Rabbit IgG

## Applications

ELISA, WB, IHC, IF, IP

## Dilutions

Recommended Dilution:

WB: 1:500-1:5000

IP: 1:200-1:2000

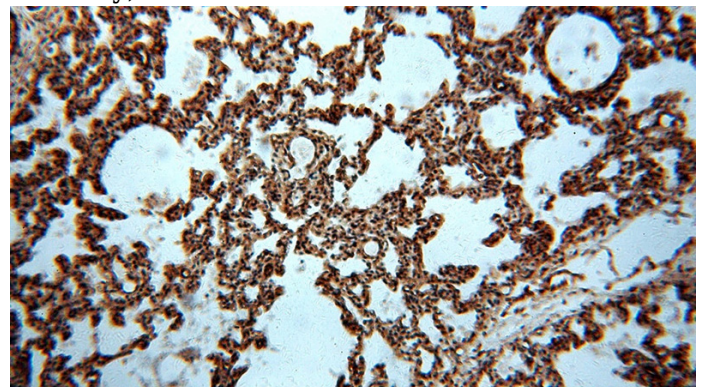
IHC: 1:20-1:200

IF: 1:10-1:100

## Validations



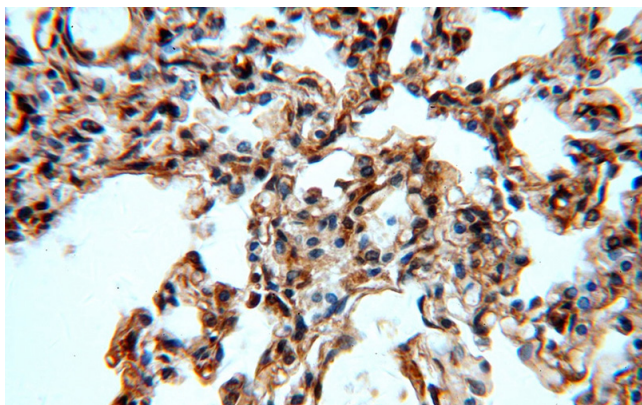
HepG2 cells were subjected to SDS PAGE followed by western blot with Catalog No:112494(MAT2B antibody) at dilution of 1:800



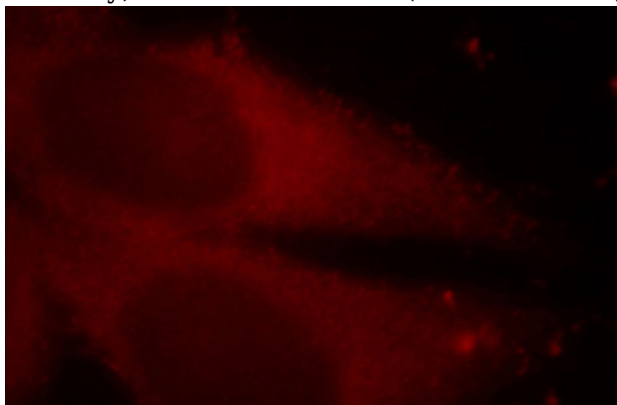
Immunohistochemical of paraffin-embedded human lung using Catalog No:112494(MAT2B antibody) at dilution of 1:100 (under 10x lens)

# MAT2B antibody

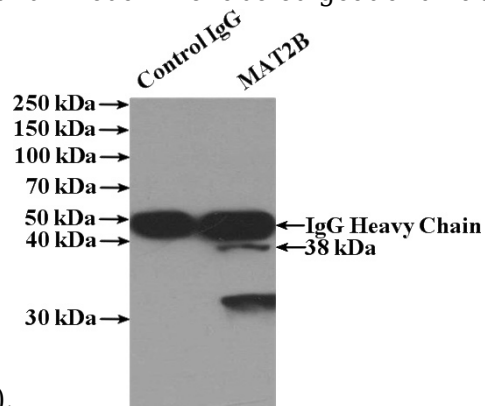
Catalog Number: 112494



Immunohistochemical of paraffin-embedded human lung using Catalog No:112494(MAT2B antibody) at dilution of 1:100 (under 40x lens)



Immunofluorescent analysis of HepG2 cells, using MAT2B antibody Catalog No:112494 at 1:25 dilution and Rhodamine-labeled goat anti-rabbit



IgG (red).

IP Result of anti-MAT2B (IP:Catalog No:112494, 4ug; Detection:Catalog No:112494 1:500) with HepG2 cells lysate 1000ug.