

# MAS1L-Specific antibody



Catalog Number: 112486

## Product name

MAS1L-Specific antibody

## Specificity

human; other species not tested.

## Antibody description

MAS1L-Specific Rabbit Polyclonal antibody. Positive IF detected in HepG2. Positive WB detected in HEK-293 cells, COLO 320 cells, HeLa cells, HepG2 cells, mouse liver tissue. Observed molecular weight by Western-blot: 42kd

## Preparation

This antibody was obtained by immunization of Peptide (Accession Number: NM\_052967). Purification method: Antigen affinity purified.

## Formulation

PBS with 0.02% sodium azide and 50% glycerol pH 7.3.

## Storage

Store at -20°C. DO NOT ALIQUOT

## Clonality

Polyclonal

## Ig Type

Rabbit IgG

## Applications

ELISA, WB, IF

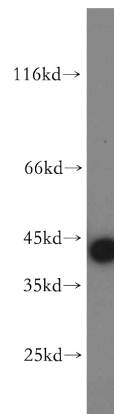
## Dilutions

Recommended Dilution:

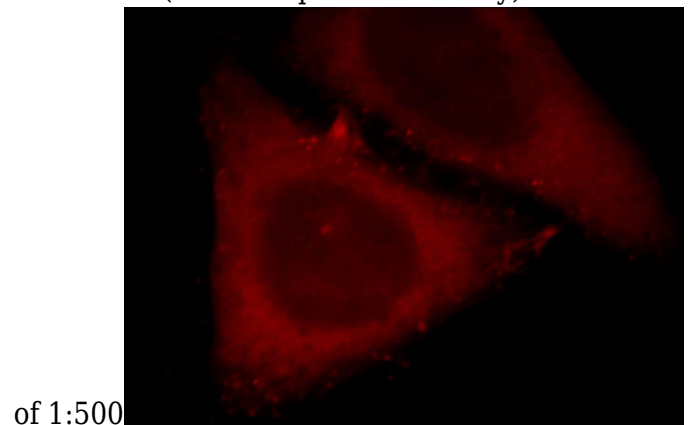
WB: 1:1000-1:10000

IF: 1:10-1:100

## Validations



HEK-293 cells were subjected to SDS PAGE followed by western blot with Catalog No:112486(MAS1L-Specific antibody) at dilution



Immunofluorescent analysis of HepG2 cells, using MAS1L antibody Catalog No:112486 at 1:25 dilution and Rhodamine-labeled goat anti-rabbit IgG (red).