

MAP1S antibody



Catalog Number: 112473

Product name

MAP1S antibody

IP: 1:200-1:2000

IHC: 1:20-1:200

Specificity

Human; other species not tested.

IF: 1:10-1:100

Antibody description

MAP1S Rabbit Polyclonal antibody. Positive IHC detected in human colon cancer tissue. Positive IF detected in Hela cells. Positive WB detected in human brain tissue. Positive IP detected in SH-SY5Y cells. Observed molecular weight by Western-blot: 100-130kd

Preparation

This antibody was obtained by immunization of MAP1S recombinant protein (Accession Number: BC008806). Purification method: Antigen affinity purified.

Formulation

PBS with 0.02% sodium azide and 50% glycerol pH 7.3.

Storage

Store at -20°C. DO NOT ALIQUOT

Clonality

Polyclonal

Ig Type

Rabbit IgG

Applications

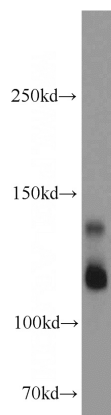
ELISA, WB, IHC, IF, IP

Dilutions

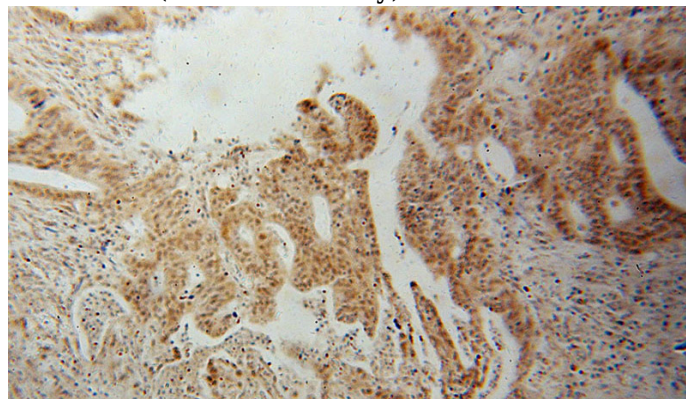
Recommended Dilution:

WB: 1:500-1:5000

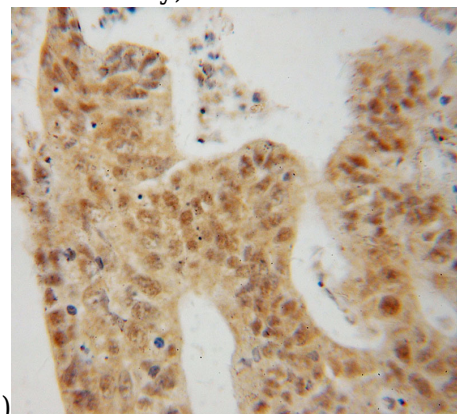
Validations



human brain tissue were subjected to SDS PAGE followed by western blot with Catalog No:112473(MAP1S antibody) at dilution of 1:1000



Immunohistochemical of paraffin-embedded human colon cancer using Catalog No:112473(MAP1S antibody) at dilution of 1:50

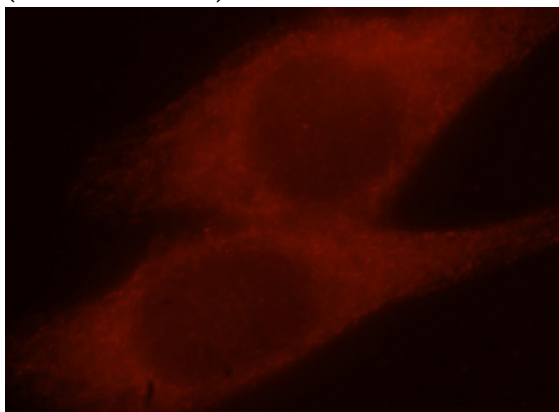


(under 10x lens)

MAP1S antibody

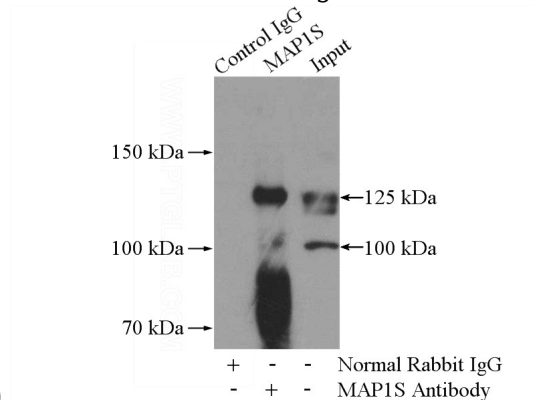
Catalog Number: 112473

Immunohistochemical of paraffin-embedded human colon cancer using Catalog No:112473(MAP1S antibody) at dilution of 1:50 (under 40x lens)



Immunofluorescent analysis of Hela cells, using

MAP1S antibody Catalog No:112473 at 1:25 dilution and Rhodamine-labeled goat anti-rabbit



IgG (red).

IP Result of anti-MAP1S (IP:Catalog No:112473, 4ug; Detection:Catalog No:112473 1:500) with SH-SY5Y cells lysate 1800ug.