

# MAN1A2 antibody



Catalog Number: 112464

## Product name

MAN1A2 antibody

## Specificity

Human; other species not tested.

## Antibody description

MAN1A2 Rabbit Polyclonal antibody. Positive WB detected in human placenta tissue. Positive IHC detected in human placenta tissue, human heart tissue, human lung tissue, human ovary tissue. Observed molecular weight by Western-blot: 73kd

## Preparation

This antibody was obtained by immunization of MAN1A2 recombinant protein (Accession Number: NM\_006699). Purification method: Antigen affinity purified.

## Formulation

PBS with 0.02% sodium azide and 50% glycerol pH 7.3.

## Storage

Store at -20°C. DO NOT ALIQUOT

## Clonality

Polyclonal

## Ig Type

Rabbit IgG

## Applications

ELISA, WB, IHC

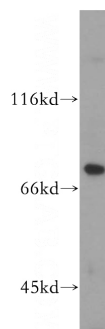
## Dilutions

Recommended Dilution:

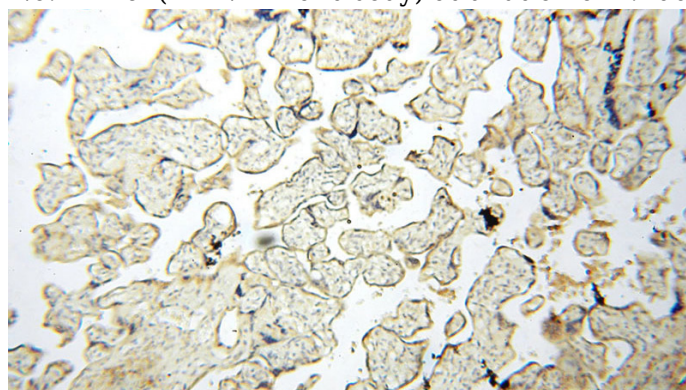
WB: 1:200-1:1000

IHC: 1:20-1:200

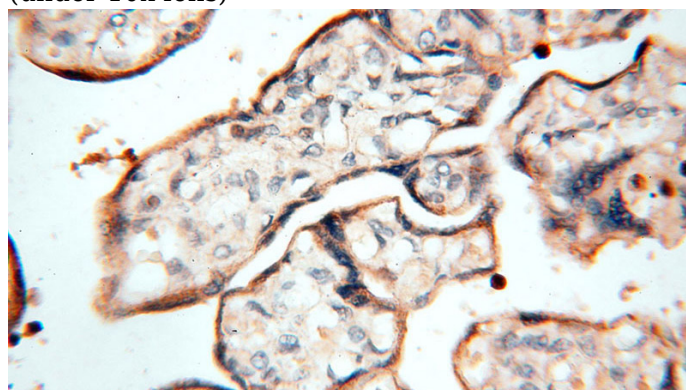
## Validations



human placenta tissue were subjected to SDS PAGE followed by western blot with Catalog No:112464(MAN1A2 antibody) at dilution of 1:200



Immunohistochemical of paraffin-embedded human placenta using Catalog No:112464(MAN1A2 antibody) at dilution of 1:50 (under 10x lens)



Immunohistochemical of paraffin-embedded human placenta using Catalog No:112464(MAN1A2 antibody) at dilution of 1:50

# MAN1A2 antibody



Catalog Number: 112464

---

(under 40x lens)