

MAPRE2 antibody



Catalog Number: 112444

Product name

MAPRE2 antibody

Specificity

Human, Mouse, Rat; other species not tested.

Antibody description

MAPRE2 Rabbit Polyclonal antibody. Positive IF detected in mouse cells. Positive WB detected in K-562 cells, Jurkat cells. Observed molecular weight by Western-blot: 39-42 kDa

Preparation

This antibody was obtained by immunization of MAPRE2 recombinant protein (Accession Number: NM_014268). Purification method: Antigen affinity purified.

Formulation

PBS with 0.1% sodium azide and 50% glycerol pH 7.3.

Storage

Store at -20°C. DO NOT ALIQUOT

Clonality

Polyclonal

Ig Type

Rabbit IgG

Applications

ELISA, WB, IF

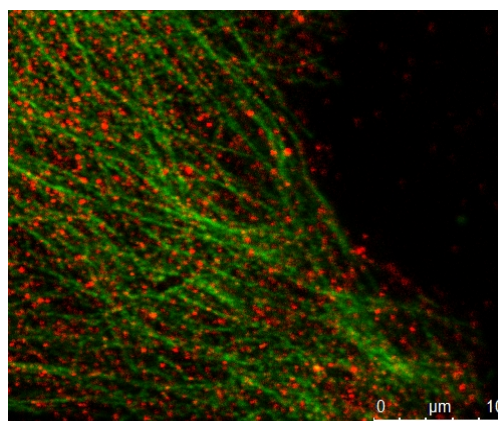
Dilutions

Recommended Dilution:

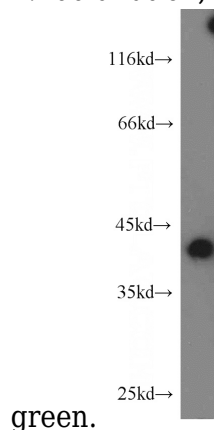
WB: 1:200-1:2000

IF: 1:50-1:500

Validations



Mouse keratinocyte showing MAPRE2 (#Catalog No:112444, 1:100 dilution, with Alexa 594 labelled 2nd Ab) in red and alpha-tubulin (#Catalog No:, 1:100 dilution, with Alexa 488 labelled 2nd Ab) in



K-562 cells were subjected to SDS PAGE followed by western blot with Catalog No:112444(MAPRE2 antibody) at dilution of 1:500