

# MAPKBP1 antibody



Catalog Number: 112442

## Product name

MAPKBP1 antibody

IHC: 1:20-1:200

IF: 1:10-1:100

## Specificity

Human, Mouse, Rat; other species not tested.

## Validations

## Antibody description

MAPKBP1 Rabbit Polyclonal antibody. Positive IHC detected in human pancreas tissue. Positive IF detected in HepG2 cells. Positive WB detected in mouse liver tissue, HeLa cells, rat liver tissue. Observed molecular weight by Western-blot: 200-230kd



## Preparation

This antibody was obtained by immunization of MAPKBP1 recombinant protein (Accession Number: BC036660). Purification method: Antigen affinity purified.

mouse liver tissue were subjected to SDS PAGE followed by western blot with Catalog No:112442(MAPKBP1 antibody) at dilution of 1:500

## Formulation

PBS with 0.02% sodium azide and 50% glycerol pH 7.3.

## Storage

Store at -20°C. DO NOT ALIQUOT

## Clonality

Polyclonal

## Ig Type

Rabbit IgG

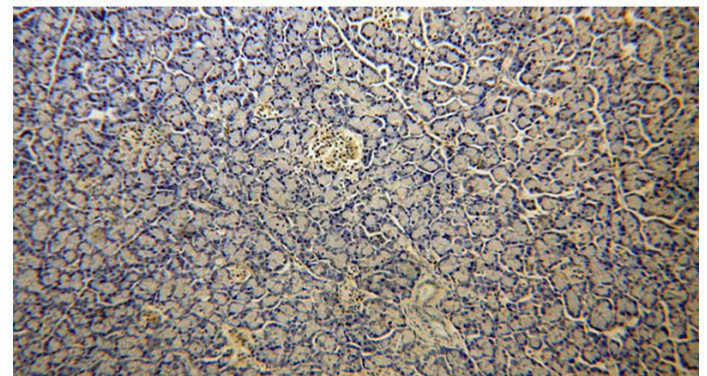
## Applications

ELISA, WB, IHC, IF

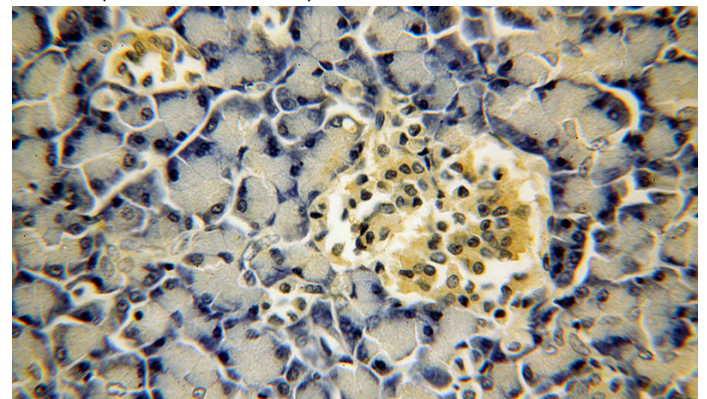
## Dilutions

Recommended Dilution:

WB: 1:200-1:2000



Immunohistochemical of paraffin-embedded human pancreas using Catalog No:112442(MAPKBP1 antibody) at dilution of 1:100 (under 10x lens)

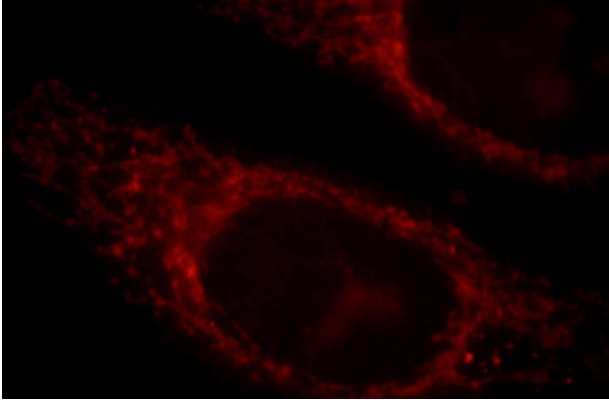


# MAPKBP1 antibody

Catalog Number: 112442

---

Immunohistochemical of paraffin-embedded human pancreas using Catalog No:112442(MAPKBP1 antibody) at dilution of 1:100 (under 40x lens)



Immunofluorescent analysis of HepG2 cells, using MAPKBP1 antibody Catalog No:112442 at 1:25 dilution and Rhodamine-labeled goat anti-rabbit IgG (red).