

MAPKAP1 antibody

Catalog Number: 112439

Product name

MAPKAP1 antibody

Specificity

human, mouse, rat; other species not tested.

Antibody description

MAPKAP1 Rabbit Polyclonal antibody. Positive WB detected in mouse skeletal muscle tissue, HeLa cells. Positive IHC detected in human heart. Observed molecular weight by Western-blot: 37-42kd,55kd

Preparation

This antibody was obtained by immunization of Peptide (Accession Number: NM_024117). Purification method: Antigen affinity purified.

Formulation

PBS with 0.02% sodium azide and 50% glycerol pH 7.3.

Storage

Store at -20°C. DO NOT ALIQUOT

Clonality

Polyclonal

Ig Type

Rabbit IgG

Applications

ELISA, WB, IHC

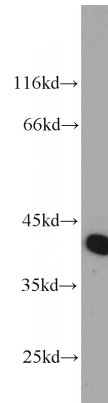
Dilutions

Recommended Dilution:

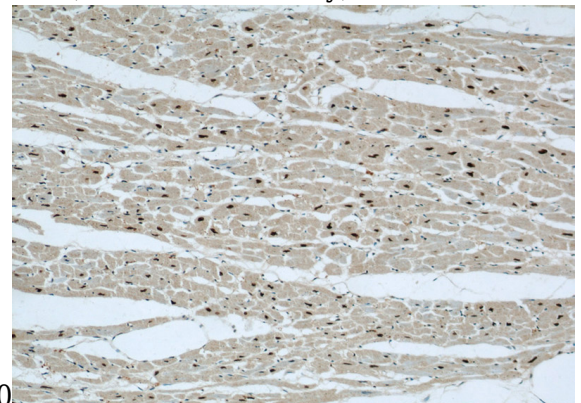
WB: 1:500-1:5000

IHC: 1:20-1:200

Validations

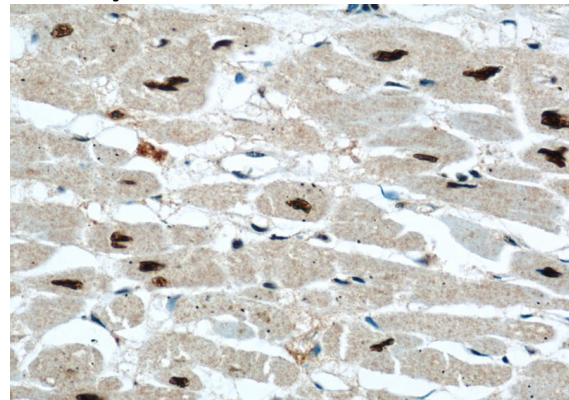


mouse skeletal muscle tissue were subjected to SDS PAGE followed by western blot with Catalog No:112439(MAPKAP1 antibody) at dilution of



1:1000

Immunohistochemical of paraffin-embedded human heart using Catalog No:112439(MAPKAP1 antibody) at dilution of 1:50 (under 10x lens)



Immunohistochemical of paraffin-embedded human heart using Catalog No:112439(MAPKAP1 antibody) at dilution of 1:50 (under 40x lens)