

# MAPKAP1 antibody



Catalog Number: 112438

## Product name

MAPKAP1 antibody

IP: 1:200-1:2000

IHC: 1:20-1:200

## Specificity

Human, Mouse, Rat; other species not tested.

IF: 1:10-1:100

## Antibody description

MAPKAP1 Rabbit Polyclonal antibody. Positive WB detected in mouse kidney tissue, HeLa cells. Positive IP detected in mouse kidney tissue. Positive IHC detected in human kidney tissue. Positive IF detected in HepG2 cells. Observed molecular weight by Western-blot: 65 kDa

## Validations

## Preparation

This antibody was obtained by immunization of MAPKAP1 recombinant protein (Accession Number: NM\_024117). Purification method: Antigen affinity purified.

## Formulation

PBS with 0.02% sodium azide and 50% glycerol pH 7.3.

## Storage

Store at -20°C. DO NOT ALIQUOT

## Clonality

Polyclonal

## Ig Type

Rabbit IgG

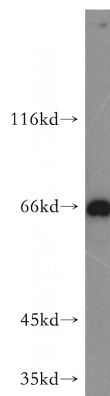
## Applications

ELISA, WB, IHC, IF, IP

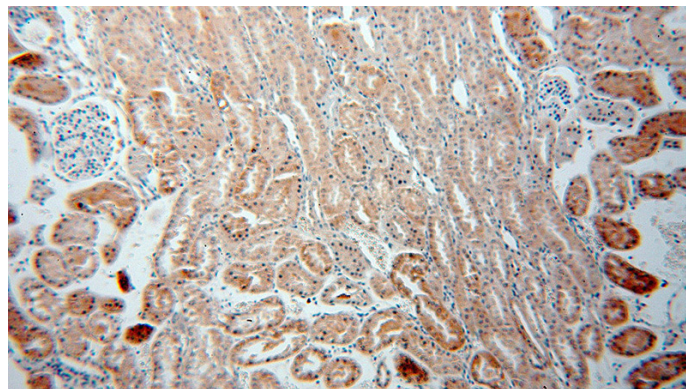
## Dilutions

Recommended Dilution:

WB: 1:500-1:5000



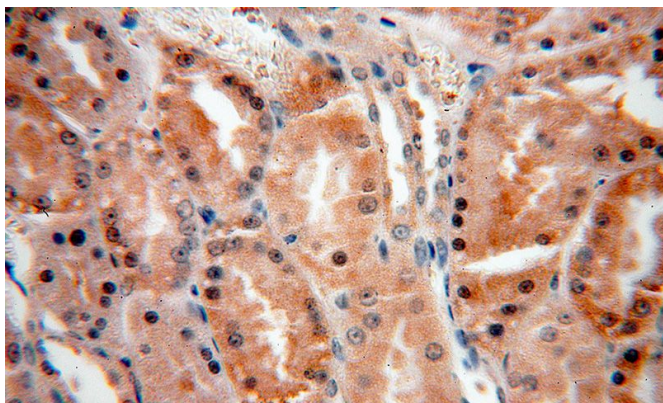
mouse kidney tissue were subjected to SDS PAGE followed by western blot with Catalog No:112438(MAPKAP1 antibody) at dilution of 1:500



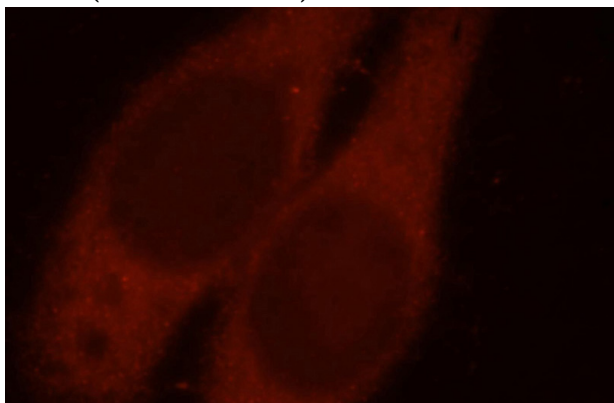
Immunohistochemical of paraffin-embedded human kidney using Catalog No:112438(MAPKAP1 antibody) at dilution of 1:100 (under 10x lens)

# MAPKAP1 antibody

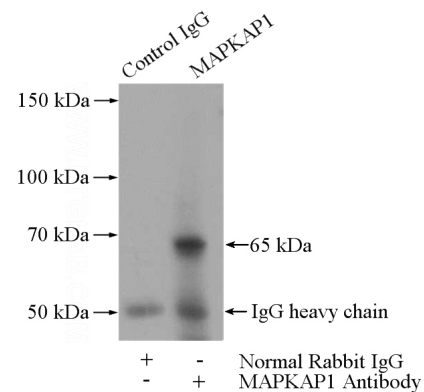
Catalog Number: 112438



Immunohistochemical of paraffin-embedded human kidney using Catalog No:112438(MAPKAP1 antibody) at dilution of 1:100 (under 40x lens)



Immunofluorescent analysis of HepG2 cells, using MAPKAP1 antibody Catalog No:112438 at 1:25 dilution and Rhodamine-labeled goat anti-rabbit



IgG (red).

IP Result of anti-MAPKAP1 (IP:Catalog No:112438, 4ug; Detection:Catalog No:112438 1:500) with mouse kidney tissue lysate 4000ug.