

MAPK6 antibody



Catalog Number: 112435

Product name

Polyclonal

MAPK6 antibody

Ig Type

Specificity

Rabbit IgG

human, mouse, rat; other species not tested.

Applications

Antibody description

ELISA, WB

MAPK6 Rabbit Polyclonal antibody. Positive WB detected in A431 cells. Observed molecular weight by Western-blot: 100-105kd

Dilutions

Recommended Dilution:

Preparation

WB: 1:200-1:2000

This antibody was obtained by immunization of MAPK6 recombinant protein (Accession Number: XM_047432849). Purification method: Antigen affinity purified.

Validations

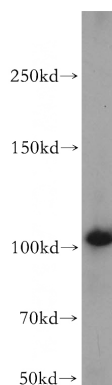
Formulation

PBS with 0.1% sodium azide and 50% glycerol pH 7.3.

Storage

Store at -20°C. DO NOT ALIQUOT

Clonality



A431 cells were subjected to SDS PAGE followed by western blot with Catalog No:112435(MAPK6 antibody) at dilution of 1:500