

MAPK12 antibody



Catalog Number: 112432

Product name

MAPK12 antibody

IP: 1:200-1:2000

IHC: 1:20-1:200

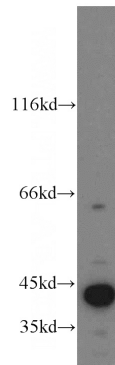
Specificity

Human, Mouse, Rat; other species not tested.

Antibody description

MAPK12 Rabbit Polyclonal antibody. Positive IP detected in mouse skeletal muscle tissue. Positive WB detected in human heart tissue, mouse skeletal muscle tissue. Positive IHC detected in human heart tissue, mouse heart tissue. Observed molecular weight by Western-blot: 42 kDa

Validations



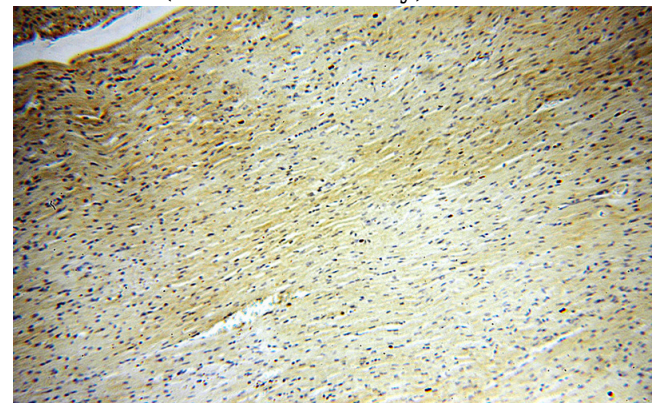
Preparation

This antibody was obtained by immunization of MAPK12 recombinant protein (Accession Number: NM_002969). Purification method: Antigen affinity purified.

human heart tissue were subjected to SDS PAGE followed by western blot with Catalog No:112432(MAPK12 antibody) at dilution of 1:500

Formulation

PBS with 0.02% sodium azide and 50% glycerol pH 7.3.



Storage

Store at -20°C. DO NOT ALIQUOT

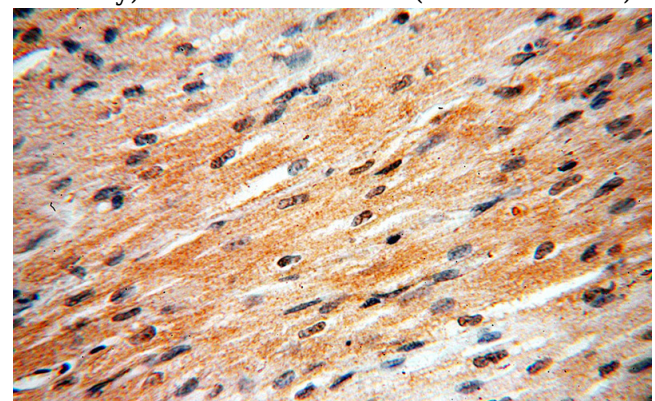
Clonality

Polyclonal

Immunohistochemical of paraffin-embedded human heart using Catalog No:112432(MAPK12 antibody) at dilution of 1:100 (under 10x lens)

Ig Type

Rabbit IgG



Applications

ELISA, WB, IHC, IP

Dilutions

Recommended Dilution:

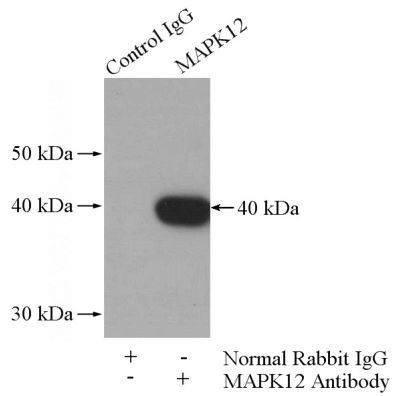
WB: 1:1000-1:10000

Immunohistochemical of paraffin-embedded human heart using Catalog No:112432(MAPK12

MAPK12 antibody

Catalog Number: 112432

antibody) at dilution of 1:100 (under 40x lens)



IP Result of anti-MAPK12 (IP:Catalog No:112432, 4ug; Detection:Catalog No:112432 1:800) with mouse skeletal muscle tissue lysate 2200ug.