

MAP4K4 antibody



Catalog Number: 112426

Product name

MAP4K4 antibody

IP: 1:200-1:1000

IHC: 1:20-1:200

Specificity

Human, Mouse, Rat; other species not tested.

Antibody description

MAP4K4 Rabbit Polyclonal antibody. Positive IHC detected in human skeletal muscle tissue, human liver tissue, human placenta tissue. Positive IP detected in HepG2 cells. Positive WB detected in human skeletal muscle tissue, PC-3 cells. Observed molecular weight by Western-blot: 130-160 kDa

Preparation

This antibody was obtained by immunization of Peptide (Accession Number: NM_004834). Purification method: Antigen affinity purified.

Formulation

PBS with 0.02% sodium azide and 50% glycerol pH 7.3.

Storage

Store at -20°C. DO NOT ALIQUOT

Clonality

Polyclonal

Ig Type

Rabbit IgG

Applications

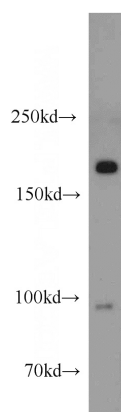
ELISA, WB, IHC, IP

Dilutions

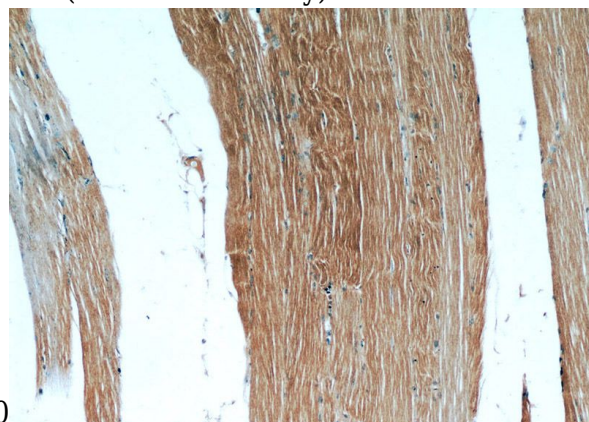
Recommended Dilution:

WB: 1:500-1:5000

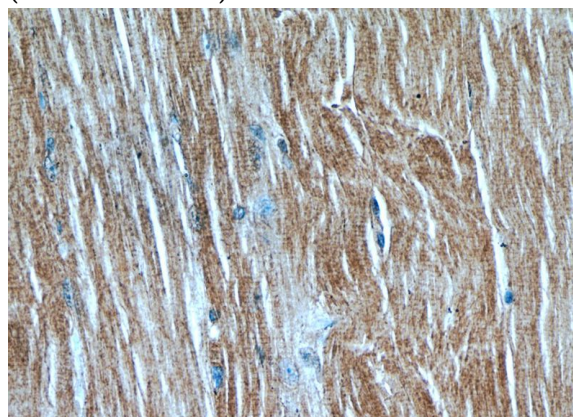
Validations



human skeletal muscle tissue were subjected to SDS PAGE followed by western blot with Catalog No:112426(MAP4K4 antibody) at dilution of



Immunohistochemical of paraffin-embedded human skeletal muscle using Catalog No:112426(MAP4K4 antibody) at dilution of 1:50 (under 10x lens)



MAP4K4 antibody



Catalog Number: 112426

Immunohistochemical of paraffin-embedded
human skeletal muscle using Catalog

No:112426(MAP4K4 antibody) at dilution of 1:50
(under 40x lens)