

LYZL6 antibody

Catalog Number: 112417

Product name

LYZL6 antibody

Specificity

Human, Mouse, Rat; other species not tested.

Antibody description

LYZL6 Rabbit Polyclonal antibody. Positive WB detected in human testis tissue. Positive IHC detected in rat testis tissue, mouse testis tissue. Observed molecular weight by Western-blot: 17kd

Preparation

This antibody was obtained by immunization of LYZL6 recombinant protein (Accession Number: NM_020426). Purification method: Antigen affinity purified.

Formulation

PBS with 0.02% sodium azide and 50% glycerol pH 7.3.

Storage

Store at -20°C. DO NOT ALIQUOT

Clonality

Polyclonal

Ig Type

Rabbit IgG

Applications

ELISA, WB, IHC

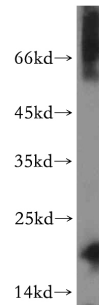
Dilutions

Recommended Dilution:

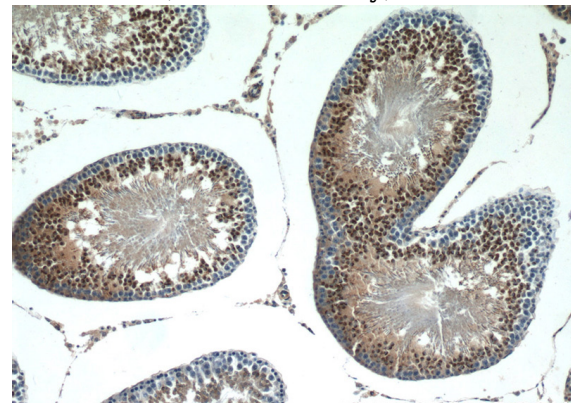
WB: 1:200-1:2000

IHC: 1:20-1:200

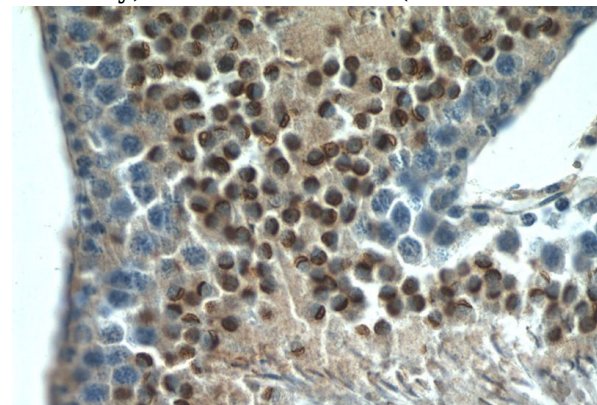
Validations



human testis tissue were subjected to SDS PAGE followed by western blot with Catalog No:112417(LYZL6 antibody) at dilution of 1:300



Immunohistochemistry of paraffin-embedded rat testis tissue slide using Catalog No:112417(LYZL6 Antibody) at dilution of 1:50 (under 40x lens)



Immunohistochemistry of paraffin-embedded rat testis tissue slide using Catalog No:112417(LYZL6 Antibody) at dilution of 1:50 (under 40x lens)