

# LYZL4 antibody



Catalog Number: 112416

## Product name

LYZL4 antibody

## Specificity

human, mouse, rat; other species not tested.

## Antibody description

LYZL4 Rabbit Polyclonal antibody. Positive WB detected in mouse testis tissue, Raji cells. Observed molecular weight by Western-blot: 16kd

## Preparation

This antibody was obtained by immunization of LYZL4 recombinant protein (Accession Number: XM\_017005705). Purification method: Antigen affinity purified.

## Formulation

PBS with 0.02% sodium azide and 50% glycerol pH 7.3.

## Storage

Store at -20°C. DO NOT ALIQUOT

## Clonality

Polyclonal

## Ig Type

Rabbit IgG

## Applications

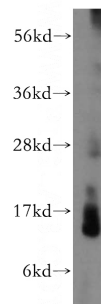
ELISA, WB

## Dilutions

Recommended Dilution:

WB: 1:500-1:5000

## Validations



mouse testis tissue were subjected to SDS PAGE followed by western blot with Catalog No:112416(LYZL4 antibody) at dilution of 1:500