

Lysozyme antibody

Catalog Number: 112414

Product name

Lysozyme antibody

IHC: 1:20-1:200

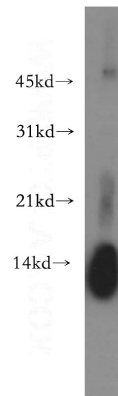
Specificity

Human, Mouse, Rat; other species not tested.

Antibody description

Lysozyme Rabbit Polyclonal antibody. Positive IHC detected in human small intestine tissue. Positive WB detected in human spleen tissue, HL-60 cells, human serum tissue, mouse lung tissue. Observed molecular weight by Western-blot: 8-16 kDa

Validations



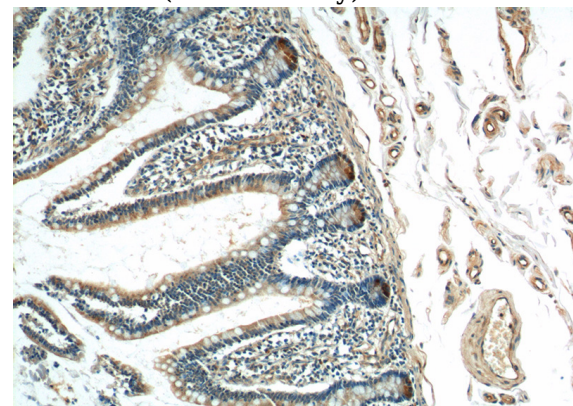
Preparation

This antibody was obtained by immunization of Lysozyme recombinant protein (Accession Number: NM_000239). Purification method: Antigen affinity purified.

human spleen tissue were subjected to SDS PAGE followed by western blot with Catalog No:112414(LYZ antibody) at dilution of 1:400

Formulation

PBS with 0.02% sodium azide and 50% glycerol pH 7.3.



Storage

Store at -20°C. DO NOT ALIQUOT

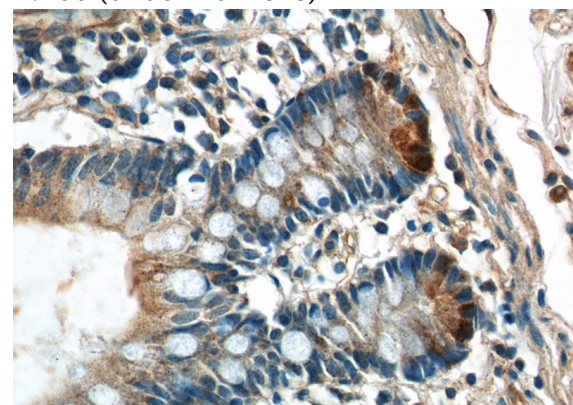
Clonality

Polyclonal

Immunohistochemistry of paraffin-embedded human small intestine tissue slide using Catalog No:112414(Lysozyme Antibody) at dilution of 1:200 (under 10x lens)

Ig Type

Rabbit IgG



Applications

ELISA, WB, IHC

Dilutions

Recommended Dilution:

WB: 1:200-1:1000

Immunohistochemistry of paraffin-embedded human small intestine tissue slide using Catalog

Lysozyme antibody



Catalog Number: 112414

No:112414(Lysozyme Antibody) at dilution of 1:200 (under 40x lens)