

# LUC7L2 antibody



Catalog Number: 112393

## Product name

LUC7L2 antibody

## Specificity

Human; other species not tested.

## Antibody description

LUC7L2 Rabbit Polyclonal antibody. Positive WB detected in K-562 cells, HeLa cells. Observed molecular weight by Western-blot: 46 kDa

## Preparation

This antibody was obtained by immunization of LUC7L2 recombinant protein (Accession Number: NM\_016019). Purification method: Antigen Affinity purified.

## Formulation

PBS with 0.02% sodium azide and 50% glycerol pH 7.3.

## Storage

Store at -20°C. DO NOT ALIQUOT

## Clonality

Polyclonal

## Ig Type

Rabbit IgG

## Applications

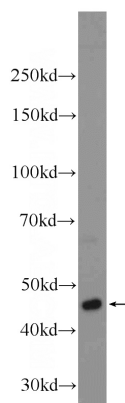
ELISA, WB

## Dilutions

Recommended Dilution:

WB: 1:500-1:5000

## Validations



K-562 cells were subjected to SDS PAGE followed by western blot with Catalog No:112393(LUC7L2 Antibody) at dilution of 1:1500