

MAG antibody



Catalog Number: 112375

Product name

MAG antibody

Specificity

Human, Mouse, Rat; other species not tested.

Antibody description

MAG Rabbit Polyclonal antibody. Positive WB detected in mouse spinal cord tissue, rat brain tissue. Positive IHC detected in human brain tissue. Observed molecular weight by Western-blot: 100 kDa

Preparation

This antibody was obtained by immunization of MAG recombinant protein (Accession Number: NM_002361). Purification method: Antigen affinity purified.

Formulation

PBS with 0.1% sodium azide and 50% glycerol pH 7.3.

Storage

Store at -20°C. DO NOT ALIQUOT

Clonality

Polyclonal

Ig Type

Rabbit IgG

Applications

ELISA, WB, IHC

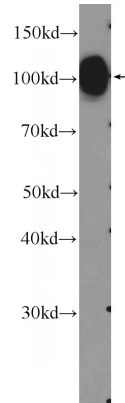
Dilutions

Recommended Dilution:

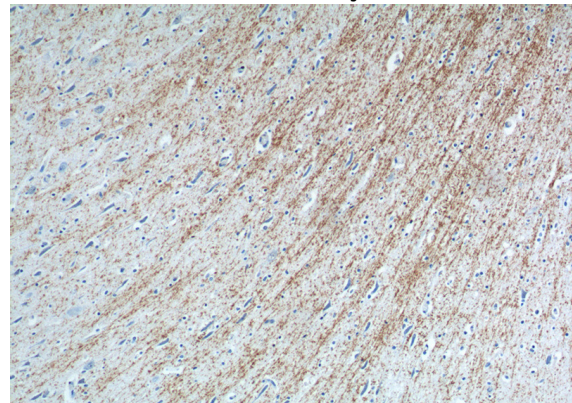
WB: 1:200-1:2000

IHC: 1:20-1:200

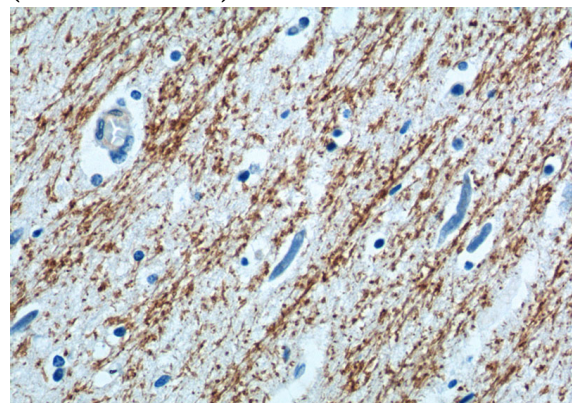
Validations



mouse spinal cord tissue were subjected to SDS PAGE followed by western blot with Catalog No:112375(MAG Antibody) at dilution of 1:600



Immunohistochemistry of paraffin-embedded human brain tissue slide using Catalog No:112375(MAG Antibody) at dilution of 1:200 (under 10x lens).



Immunohistochemistry of paraffin-embedded human brain tissue slide using Catalog

MAG antibody



Catalog Number: 112375

No:112375(MAG Antibody) at dilution of 1:200 (under 40x lens).