

MAD1 antibody

Catalog Number: 112366

Product name

MAD1 antibody

Specificity

Human, Mouse, Rat; other species not tested.

Antibody description

MAD1 Rabbit Polyclonal antibody. Positive IF detected in SH-SY5Y cells, A431 cells. Positive IHC detected in human brain tissue, human kidney tissue, human ovary tissue, human placenta tissue, human skin tissue, human spleen tissue, human testis tissue. Positive WB detected in A431 cells, HeLa cells, HepG2 cells, human brain tissue, Raji cells. Positive IP detected in HeLa cells. Observed molecular weight by Western-blot: 83 kDa

Preparation

This antibody was obtained by immunization of MAD1 recombinant protein (Accession Number: NM_001304523). Purification method: Antigen affinity purified.

Formulation

PBS with 0.02% sodium azide and 50% glycerol pH 7.3.

Storage

Store at -20°C. DO NOT ALIQUOT

Clonality

Polyclonal

Ig Type

Rabbit IgG

Applications

ELISA, WB, IHC, IP, IF

Dilutions

Recommended Dilution:

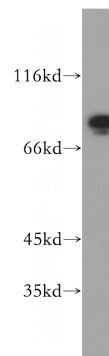
WB: 1:500-1:5000

IP: 1:500-1:5000

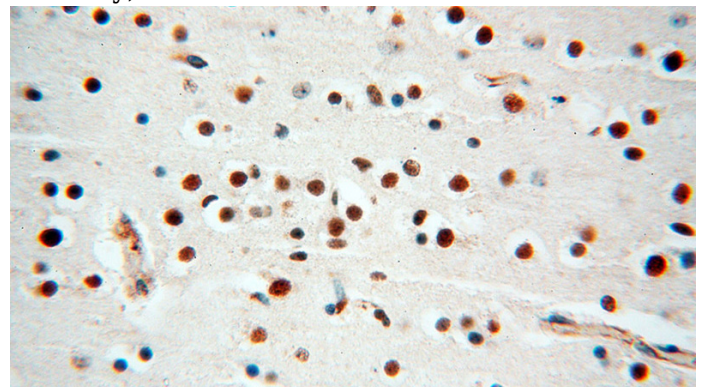
IHC: 1:20-1:200

IF: 1:20-1:200

Validations



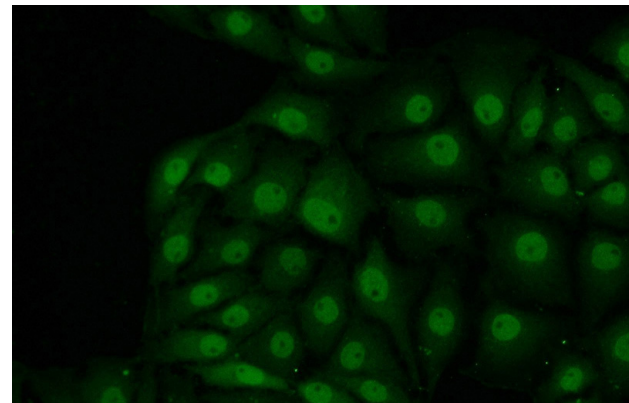
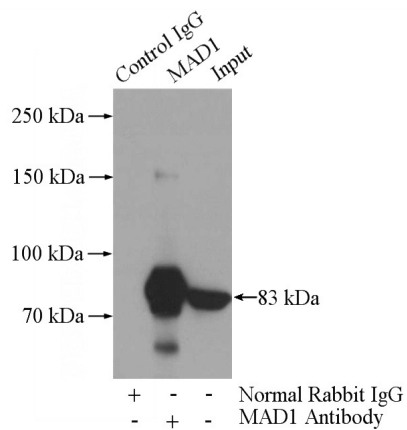
A431 cells were subjected to SDS PAGE followed by western blot with Catalog No:112366(MAD1L1 antibody) at dilution of 1:500



Immunohistochemical of paraffin-embedded human brain using Catalog No:112366(MAD1L1 antibody) at dilution of 1:100 (under 40x lens)

MAD1 antibody

Catalog Number: 112366



Immunofluorescent analysis of SH-SY5Y cells using Catalog No:112366(MAD1L1 Antibody) at dilution of 1:50 and Alexa Fluor 488-conjugated AffiniPure Goat Anti-Rabbit IgG(H+L)

IP Result of anti-MAD1L1 (IP:Catalog No:112366, 5ug; Detection:Catalog No:112366 1:1000) with HeLa cells lysate 880ug.