

# LSS antibody

Catalog Number: 112355

## Product name

LSS antibody

Recommended Dilution:

WB: 1:500-1:5000

## Specificity

Human, Mouse, Rat; other species not tested.

IP: 1:200-1:2000

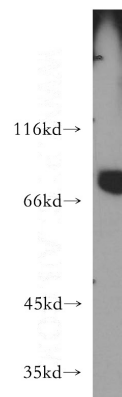
IHC: 1:20-1:200

## Antibody description

LSS Rabbit Polyclonal antibody. Positive IP detected in HepG2 cells. Positive WB detected in mouse testis tissue, HeLa cells, HepG2 cells, human brain tissue, mouse liver tissue, mouse pancreas tissue, PC-3 cells. Positive FC detected in HeLa cells. Positive IF detected in HepG2 cells. Positive IHC detected in human liver tissue, mouse testis tissue. Observed molecular weight by Western-blot: 70-75 kDa

IF: 1:20-1:200

## Validations



mouse testis tissue were subjected to SDS PAGE followed by western blot with Catalog No:112355(LSS antibody) at dilution of 1:400

## Preparation

This antibody was obtained by immunization of LSS recombinant protein (Accession Number: NM\_001001438). Purification method: Antigen affinity purified.

## Formulation

PBS with 0.02% sodium azide and 50% glycerol pH 7.3.

## Storage

Store at -20°C. DO NOT ALIQUOT

## Clonality

Polyclonal

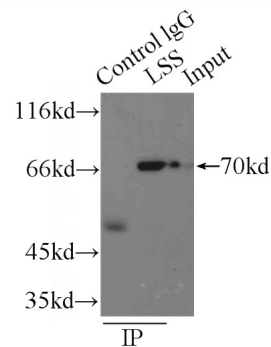
## Ig Type

Rabbit IgG

## Applications

ELISA, WB, IP, IHC, IF, FC

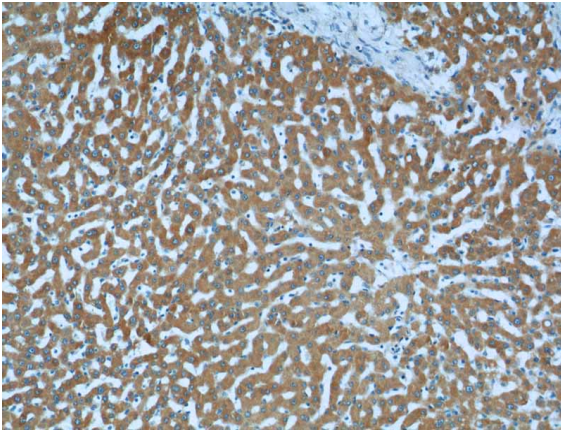
## Dilutions



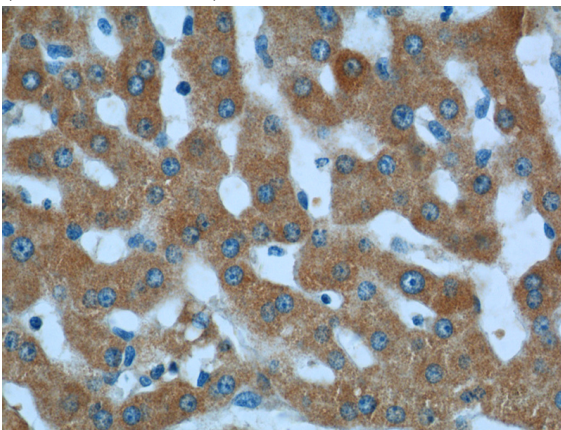
IP Result of anti-LSS (IP:Catalog No:112355, 3ug; Detection:Catalog No:112355 1:500) with HepG2 cells lysate 2900ug.

# LSS antibody

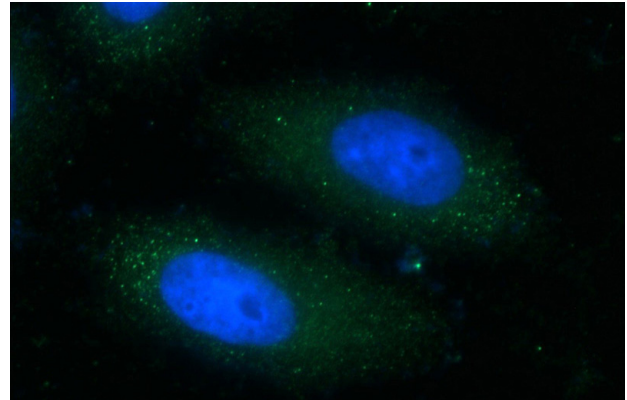
Catalog Number: 112355



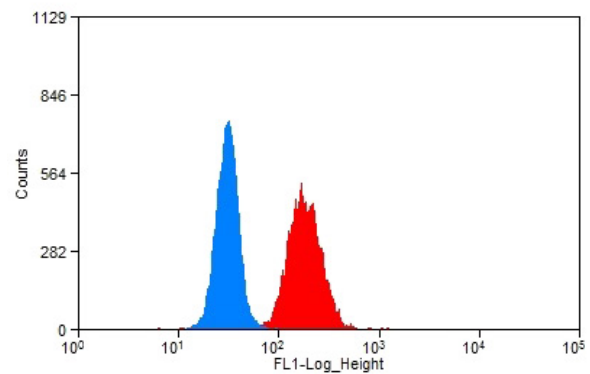
Immunohistochemistry of paraffin-embedded human liver tissue slide using Catalog No:112355(LSS Antibody) at dilution of 1:50 (under 10x lens)



Immunohistochemistry of paraffin-embedded human liver tissue slide using Catalog No:112355(LSS Antibody) at dilution of 1:50 (under 40x lens)



Immunofluorescent analysis of HepG2 cells using Catalog No:112355(LSS Antibody) at dilution of 1:50 and Alexa Fluor 488-conjugated AffiniPure Goat Anti-Rabbit IgG(H+L)



$1 \times 10^6$  HeLa cells were stained with 0.2ug LSS antibody (Catalog No:112355, red) and control antibody (blue). Fixed with 90% MeOH blocked with 3% BSA (30 min). Alexa Fluor 488-conjugated AffiniPure Goat Anti-Rabbit IgG(H+L) with dilution 1:1500.