

LSM1 antibody



Catalog Number: 112345

Product name

LSM1 antibody

IP: 1:200-1:1000

IHC: 1:20-1:200

Specificity

Human, Mouse, Rat; other species not tested.

Antibody description

LSM1 Rabbit Polyclonal antibody. Positive IHC detected in human prostate cancer tissue. Positive IP detected in HeLa cells. Positive WB detected in HeLa cells, mouse kidney tissue. Observed molecular weight by Western-blot: 18-20 kDa

Preparation

This antibody was obtained by immunization of LSM1 recombinant protein (Accession Number: NM_014462). Purification method: Antigen affinity purified.

Formulation

PBS with 0.1% sodium azide and 50% glycerol pH 7.3.

Storage

Store at -20°C. DO NOT ALIQUOT

Clonality

Polyclonal

Ig Type

Rabbit IgG

Applications

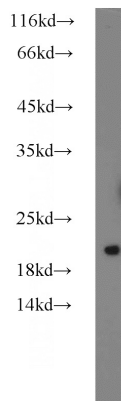
ELISA, IHC, WB, IP

Dilutions

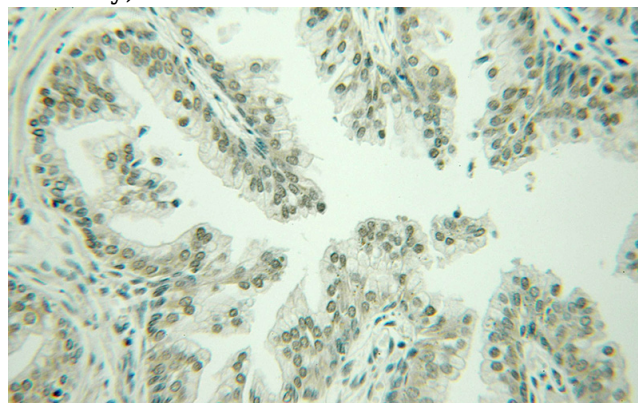
Recommended Dilution:

WB: 1:200-1:2000

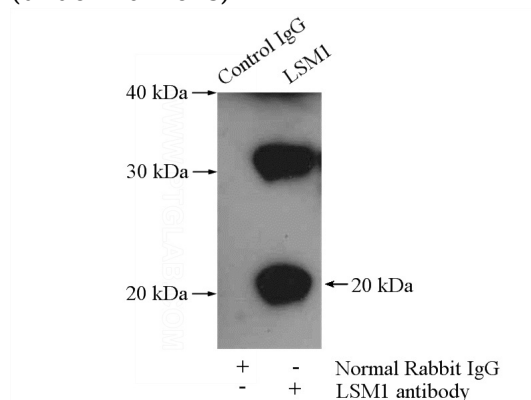
Validations



HeLa cells were subjected to SDS PAGE followed by western blot with Catalog No:112345(LSM1 antibody) at dilution of 1:600



Immunohistochemical of paraffin-embedded human prostate cancer using Catalog No:112345(LSM1 antibody) at dilution of 1:100 (under 10x lens)



IP Result of anti-LSM1 (IP:Catalog No:112345,

LSM1 antibody



Catalog Number: 112345

4ug; Detection:Catalog No:112345 1:300) with HeLa cells lysate 2000ug.