

LSG1 antibody

Catalog Number: 112344

Product name

LSG1 antibody

WB: 1:200-1:2000

IP: 1:200-1:2000

Specificity

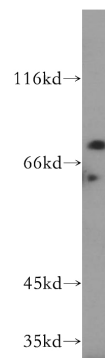
Human, Mouse, Rat; other species not tested.

IHC: 1:20-1:200

Antibody description

LSG1 Rabbit Polyclonal antibody. Positive WB detected in HeLa cells. Positive IP detected in HeLa cells. Positive IHC detected in human testis tissue, human kidney tissue, human lung tissue, human ovary tissue, human placenta tissue, human spleen tissue. Observed molecular weight by Western-blot: 75 kDa

Validations



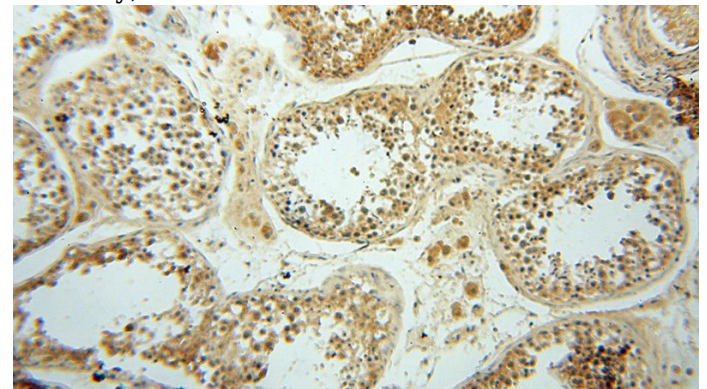
Preparation

This antibody was obtained by immunization of LSG1 recombinant protein (Accession Number: NM_018385). Purification method: Antigen affinity purified.

HeLa cells were subjected to SDS PAGE followed by western blot with Catalog No:112344(LSG1 antibody) at dilution of 1:500

Formulation

PBS with 0.02% sodium azide and 50% glycerol pH 7.3.



Storage

Store at -20°C. DO NOT ALIQUOT

Clonality

Polyclonal

Immunohistochemical of paraffin-embedded human testis using Catalog No:112344(LSG1 antibody) at dilution of 1:50 (under 10x lens)

Ig Type

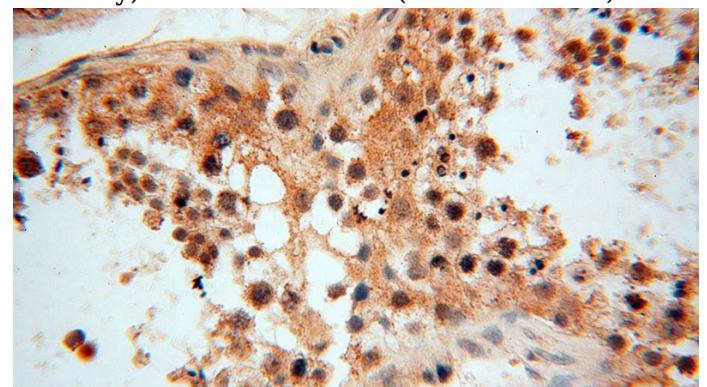
Rabbit IgG

Applications

ELISA, WB, IHC, IP

Dilutions

Recommended Dilution:

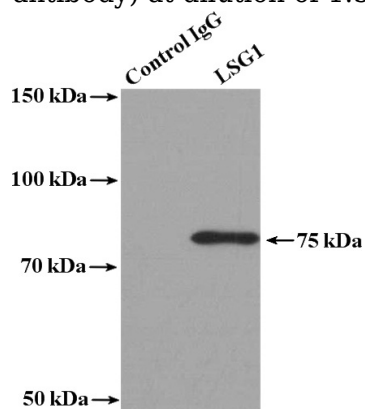


Immunohistochemical of paraffin-embedded

LSG1 antibody

Catalog Number: 112344

human testis using Catalog No:112344(LSG1 antibody) at dilution of 1:50 (under 40x lens)



IP Result of anti-LSG1 (IP:Catalog No:112344, 4ug; Detection:Catalog No:112344 1:500) with HeLa cells lysate 3400ug.