

LRRC8D antibody



Catalog Number: 112338

Product name

LRRC8D antibody

Specificity

Human, Mouse, Rat; other species not tested.

Antibody description

LRRC8D Rabbit Polyclonal antibody. Positive IF detected in HeLa cells. Positive WB detected in HeLa cells. Observed molecular weight by Western-blot: 98-120 kDa

Preparation

This antibody was obtained by immunization of LRRC8D recombinant protein (Accession Number: NM_001134479). Purification method: Antigen affinity purified.

Formulation

PBS with 0.1% sodium azide and 50% glycerol pH 7.3.

Storage

Store at -20°C. DO NOT ALIQUOT

Clonality

Polyclonal

Ig Type

Rabbit IgG

Applications

ELISA, WB, IF

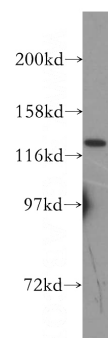
Dilutions

Recommended Dilution:

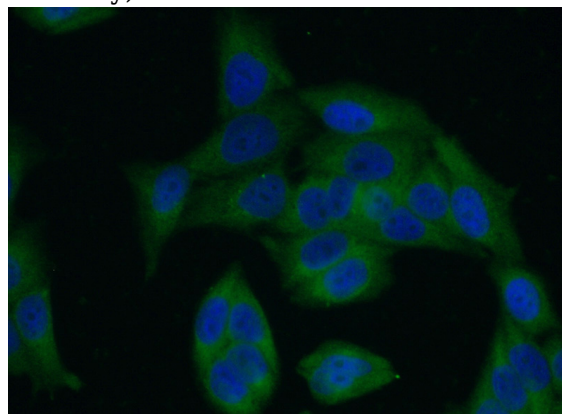
WB: 1:200-1:2000

IF: 1:50-1:500

Validations



HeLa cells were subjected to SDS PAGE followed by western blot with Catalog No:112338(LRRC8D antibody) at dilution of 1:400



Immunofluorescent analysis of (-20oc Ethanol) fixed HeLa cells using Catalog No:112338(LRRC8D Antibody) at dilution of 1:50 and Alexa Fluor 488-conjugated AffiniPure Goat Anti-Rabbit IgG(H+L)