

LRRC47 antibody



Catalog Number: 112334

Product name

LRRC47 antibody

IHC: 1:20-1:200

IF: 1:20-1:200

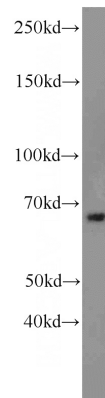
Specificity

Human, Mouse, Rat; other species not tested.

Antibody description

LRRC47 Rabbit Polyclonal antibody. Positive WB detected in mouse liver tissue, L02 cells, Neuro-2a cells, NIH/3T3 cells, rat liver tissue. Positive IF detected in L02 cells. Positive IHC detected in human pancreas tissue. Observed molecular weight by Western-blot: 63 kDa

Validations



Preparation

This antibody was obtained by immunization of LRRC47 recombinant protein (Accession Number: NM_020710). Purification method: Antigen Affinity purified.

mouse liver tissue were subjected to SDS PAGE followed by western blot with Catalog No:112334(LRRC47 antibody) at dilution of 1:1000

Formulation

PBS with 0.02% sodium azide and 50% glycerol pH 7.3.

Storage

Store at -20°C. DO NOT ALIQUOT

Clonality

Polyclonal

Ig Type

Rabbit IgG

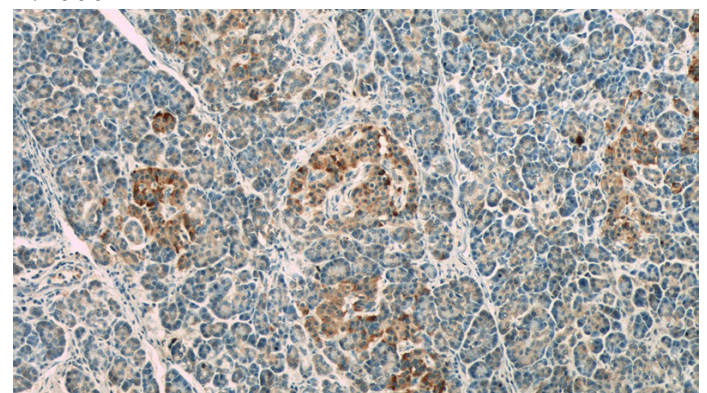
Applications

ELISA, WB, IHC, IF

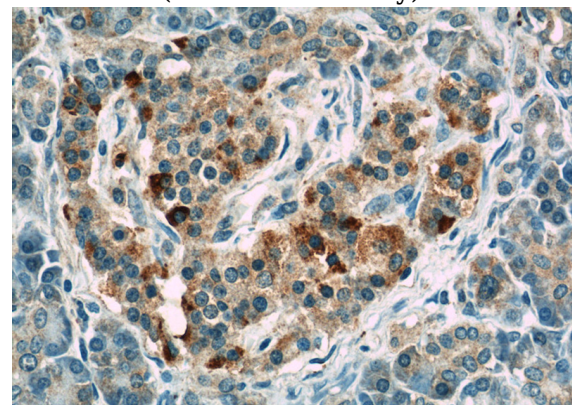
Dilutions

Recommended Dilution:

WB: 1:500-1:5000



Immunohistochemistry of paraffin-embedded human pancreas slide using Catalog No:112334(LRRC47 Antibody) at dilution of 1:50

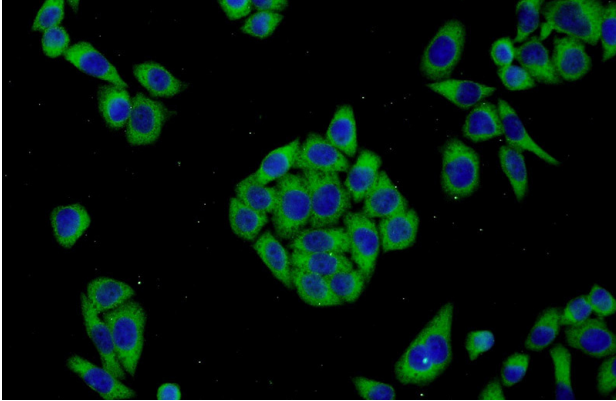


Immunohistochemistry of paraffin-embedded

LRRC47 antibody

Catalog Number: 112334

human pancreas slide using Catalog
No:112334(LRRC47 Antibody) at dilution of 1:50



Immunofluorescent analysis of L02 cells using
Catalog No:112334(LRRC47 Antibody) at dilution
of 1:50 and Alexa Fluor 488-conjugated AffiniPure
Goat Anti-Rabbit IgG(H+L)