

# LRRC1 antibody



Catalog Number: 112327

---

## Product name

LRRC1 antibody

## Specificity

human, mouse, rat; other species not tested.

## Antibody description

LRRC1 Rabbit Polyclonal antibody. Positive IHC detected in human prostate cancer.

## Preparation

This antibody was obtained by immunization of LRRC1 recombinant protein (Accession Number: XM\_011514726). Purification method: Antigen affinity purified.

## Formulation

PBS with 0.1% sodium azide and 50% glycerol pH 7.3.

## Storage

Store at -20°C. DO NOT ALIQUOT

## Clonality

Polyclonal

## Ig Type

Rabbit IgG

## Applications

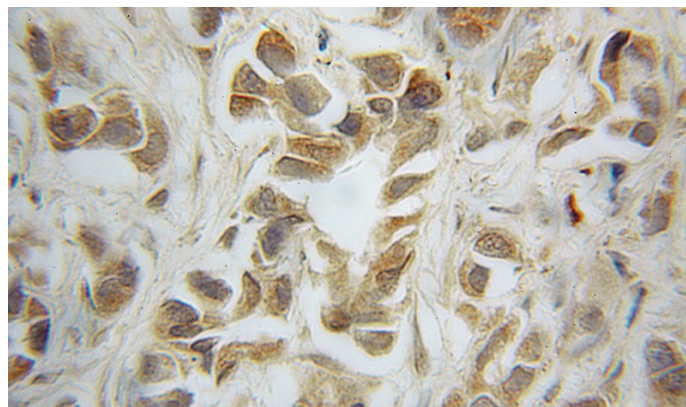
ELISA, IHC

## Dilutions

Recommended Dilution:

IHC: 1:20-1:200

## Validations



Immunohistochemical of paraffin-embedded human prostate cancer using Catalog No:112327(LRRC1 antibody) at dilution of 1:50 (under 10x lens)