

LRDD antibody

Catalog Number: 112317

Product name

LRDD antibody

IP: 1:200-1:2000

IHC: 1:20-1:200

Specificity

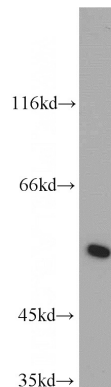
Human, Mouse, Rat; other species not tested.

IF: 1:10-1:100

Antibody description

LRDD Rabbit Polyclonal antibody. Positive IHC detected in human pancreas tissue, human liver tissue. Positive IF detected in Hela cells. Positive IP detected in L02 cells. Positive WB detected in L02 cells, HEK-293 cells. Observed molecular weight by Western-blot: 55 kDa

Validations



Preparation

This antibody was obtained by immunization of LRDD recombinant protein (Accession Number: NM_145887). Purification method: Antigen affinity purified.

L02 cells were subjected to SDS PAGE followed by western blot with Catalog No:112317(LRDD antibody) at dilution of 1:300

Formulation

PBS with 0.02% sodium azide and 50% glycerol pH 7.3.

Storage

Store at -20°C. DO NOT ALIQUOT

Clonality

Polyclonal

Ig Type

Rabbit IgG

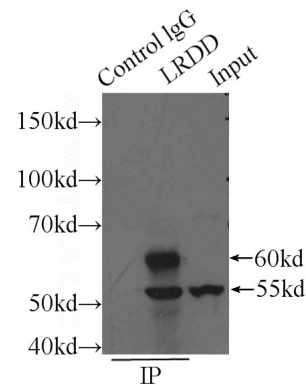
Applications

ELISA, IF, IP, WB, IHC

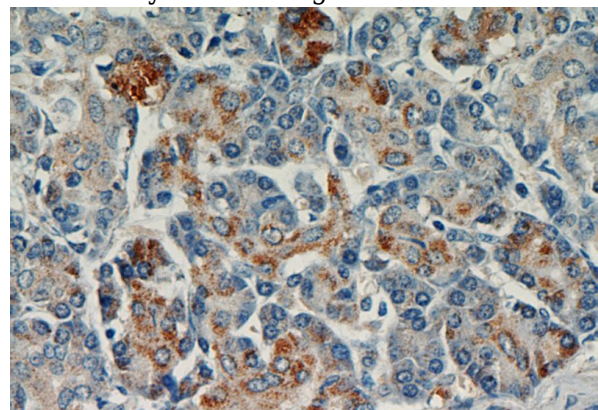
Dilutions

Recommended Dilution:

WB: 1:200-1:1000



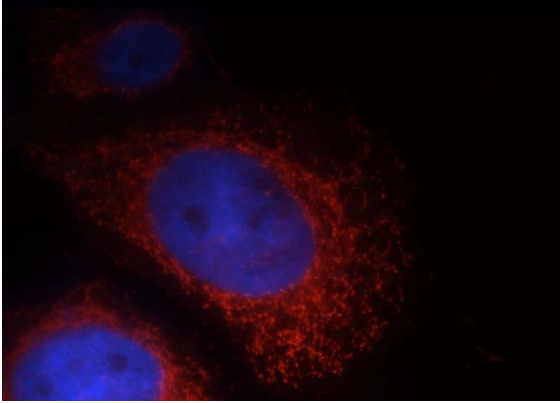
IP Result of anti-LRDD (IP:Catalog No:112317, 4ug; Detection:Catalog No:112317 1:500) with L02 cells lysate 2800ug.



LRDD antibody

Catalog Number: 112317

Immunohistochemical of paraffin-embedded human pancreas using Catalog No:112317(LRDD antibody) at dilution of 1:50 (under 40x lens)



Immunofluorescent analysis of Hela cells, using LRDD antibody Catalog No:112317 at 1:25 dilution and Rhodamine-labeled goat anti-rabbit IgG (red). Blue pseudocolor = DAPI (fluorescent DNA dye).