

LRCH1 antibody

Catalog Number: 112314

Product name

LRCH1 antibody

IP: 1:200-1:1000

IHC: 1:20-1:200

Specificity

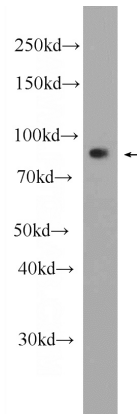
Human; other species not tested.

IF: 1:10-1:100

Antibody description

LRCH1 Rabbit Polyclonal antibody. Positive IP detected in HeLa cells. Positive WB detected in HeLa cells. Positive IF detected in MCF-7 cells. Positive IHC detected in human cervical cancer tissue. Observed molecular weight by Western-blot: 85-95 kDa

Validations



HeLa cells were subjected to SDS PAGE followed by western blot with Catalog No:112314(LRCH1 Antibody) at dilution of 1:1000

Preparation

This antibody was obtained by immunization of LRCH1 recombinant protein (Accession Number: NM_001164213). Purification method: Antigen affinity purified.

Formulation

PBS with 0.1% sodium azide and 50% glycerol pH 7.3.

Storage

Store at -20°C. DO NOT ALIQUOT

Clonality

Polyclonal

Ig Type

Rabbit IgG

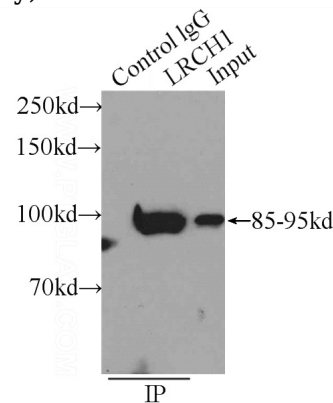
Applications

ELISA, WB, IP, IHC, IF

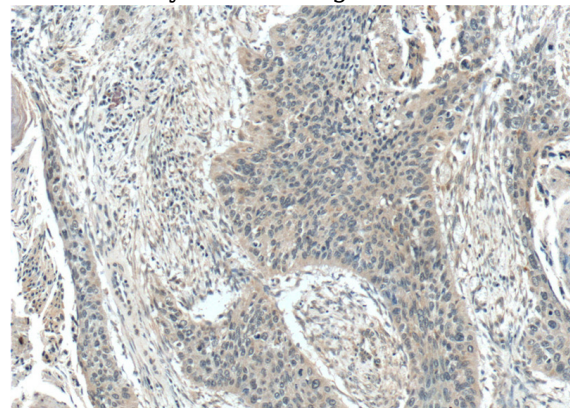
Dilutions

Recommended Dilution:

WB: 1:500-1:5000



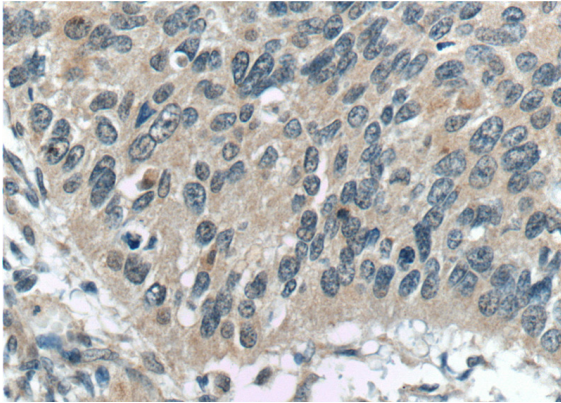
IP Result of anti-LRCH1 (IP:Catalog No:112314, 4ug; Detection:Catalog No:112314 1:300) with HeLa cells lysate 1600ug.



LRCH1 antibody

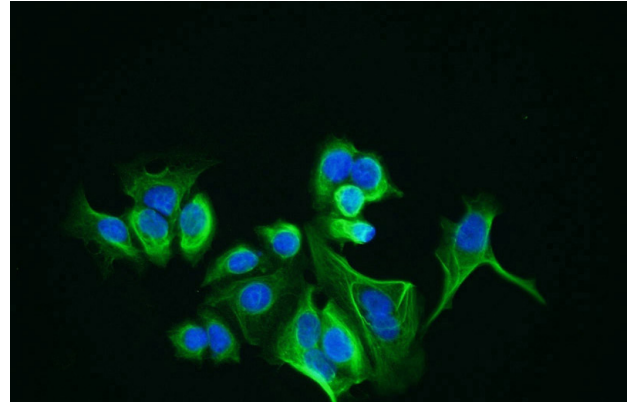
Catalog Number: 112314

Immunohistochemistry of paraffin-embedded human cervical cancer tissue slide using Catalog No:112314(LRCH1 Antibody) at dilution of 1:50 (under 10x lens)



Immunohistochemistry of paraffin-embedded human cervical cancer tissue slide using Catalog

No:112314(LRCH1 Antibody) at dilution of 1:50 (under 40x lens)



Immunofluorescent analysis of MCF-7 cells using Catalog No:112314(LRCH1 Antibody) at dilution of 1:25 and Alexa Fluor 488-conjugated AffiniPure Goat Anti-Rabbit IgG(H+L)