

LPXN antibody

Catalog Number: 112312

Product name

LPXN antibody

IHC: 1:20-1:200

IF: 1:20-1:200

Specificity

Human, Mouse, Rat; other species not tested.

Antibody description

LPXN Rabbit Polyclonal antibody. Positive IHC detected in human prostate cancer tissue, human lung cancer tissue, human tonsillitis tissue. Positive IF detected in PC-3 cells. Positive WB detected in PC-3 cells, RAW 264.7 cells. Observed molecular weight by Western-blot: 50-60 kDa

Preparation

This antibody was obtained by immunization of LPXN recombinant protein (Accession Number: NM_004811). Purification method: Antigen affinity purified.

Formulation

PBS with 0.1% sodium azide and 50% glycerol pH 7.3.

Storage

Store at -20°C. DO NOT ALIQUOT

Clonality

Polyclonal

Ig Type

Rabbit IgG

Applications

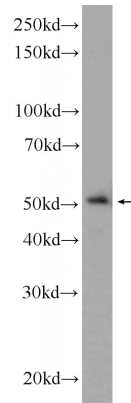
ELISA, WB, IHC, IF

Dilutions

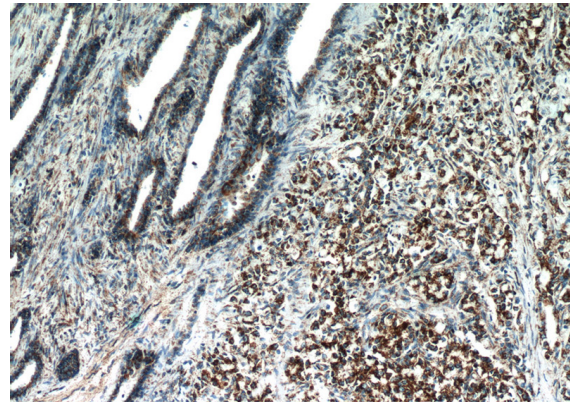
Recommended Dilution:

WB: 1:200-1:2000

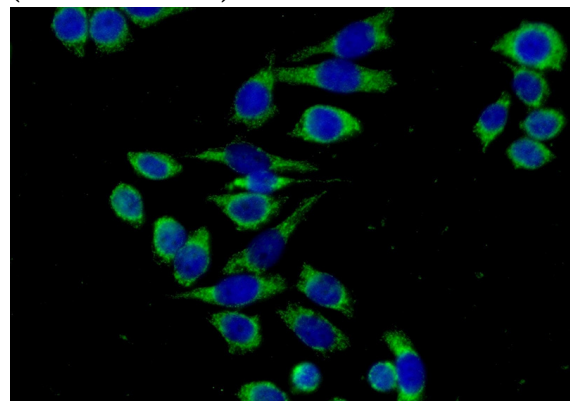
Validations



PC-3 cells were subjected to SDS PAGE followed by western blot with Catalog No:112312(LPXN Antibody) at dilution of 1:600



Immunohistochemistry of paraffin-embedded human prostate cancer slide using Catalog No:112312(LPXN Antibody) at dilution of 1:50. (under 10x lens)



Immunofluorescent analysis of (-20oc Ethanol)

LPXN antibody



Catalog Number: 112312

fixed PC-3 cells using Catalog No:112312(LPXN

Antibody) at dilution of 1:50 and Alexa Fluor 488-conjugated AffiniPure Goat Anti-Rabbit IgG(H+L)