

# LPO antibody

Catalog Number: 112308

## Product name

LPO antibody

## Specificity

Human, Mouse; other species not tested.

## Antibody description

LPO Rabbit Polyclonal antibody. Positive IHC detected in human colon cancer tissue, human breast cancer tissue. Positive WB detected in human saliva tissue, K-562 cells. Observed molecular weight by Western-blot: 80 kDa

## Preparation

This antibody was obtained by immunization of peptide (Accession Number: NM\_006151). Purification method: Antigen affinity purified.

## Formulation

PBS with 0.1% sodium azide and 50% glycerol pH 7.3.

## Storage

Store at -20°C. DO NOT ALIQUOT

## Clonality

Polyclonal

## Ig Type

Rabbit IgG

## Applications

ELISA, WB, IHC

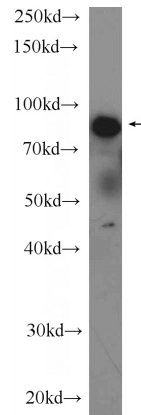
## Dilutions

Recommended Dilution:

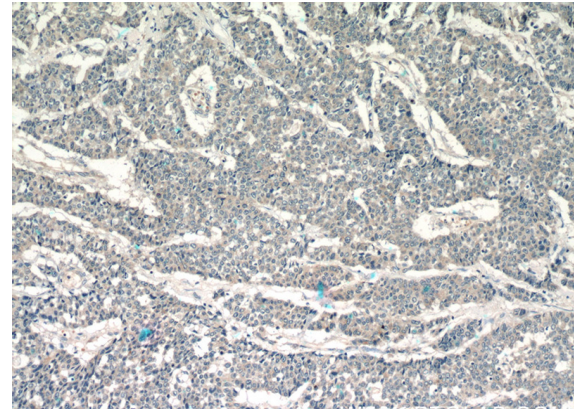
WB: 1:500-1:5000

IHC: 1:20-1:200

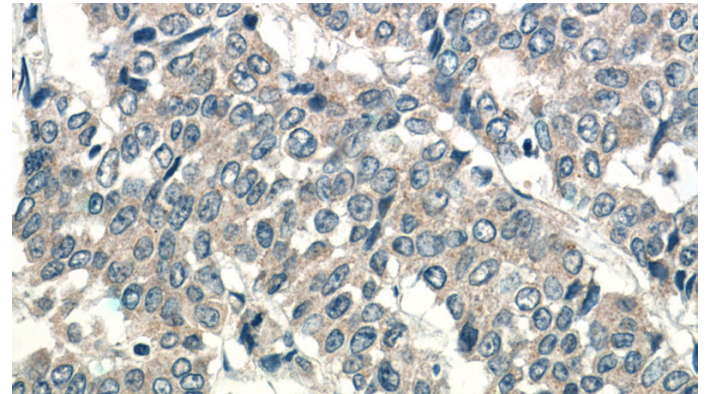
## Validations



human saliva tissue were subjected to SDS PAGE followed by western blot with Catalog No:112308(LPO Antibody) at dilution of 1:1000



Immunohistochemistry of paraffin-embedded human colon cancer tissue slide using Catalog No:112308(LPO Antibody) at dilution of 1:50 (under 10x lens)



Immunohistochemistry of paraffin-embedded human colon cancer tissue slide using Catalog No:112308(LPO Antibody) at dilution of 1:50 (under 40x lens)