

L-Plastin antibody

Catalog Number: 112306

Product name

L-Plastin antibody

WB: 1:500-1:5000

IP: 1:500-1:5000

Specificity

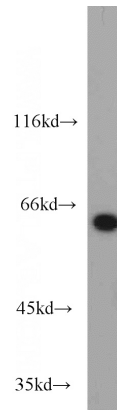
Human, Mouse, Rat; other species not tested.

IHC: 1:20-1:200

Antibody description

L-Plastin Rabbit Polyclonal antibody. Positive WB detected in Jurkat cells, K-562 cells, mouse spleen tissue. Positive IP detected in Jurkat cells. Positive IHC detected in human lymphoma tissue, human small intestine tissue. Positive FC detected in Raji cells. Observed molecular weight by Western-blot: 64-70 kDa

Validations



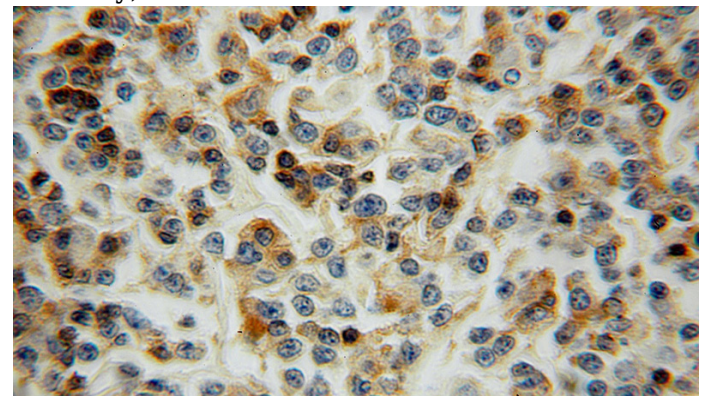
Preparation

This antibody was obtained by immunization of L-Plastin recombinant protein (Accession Number: XM_047430303). Purification method: Antigen affinity purified.

Jurkat cells were subjected to SDS PAGE followed by western blot with Catalog No:112306(LCP1 antibody) at dilution of 1:1000

Formulation

PBS with 0.02% sodium azide and 50% glycerol pH 7.3.



Storage

Store at -20°C. DO NOT ALIQUOT

Clonality

Polyclonal

Ig Type

Rabbit IgG

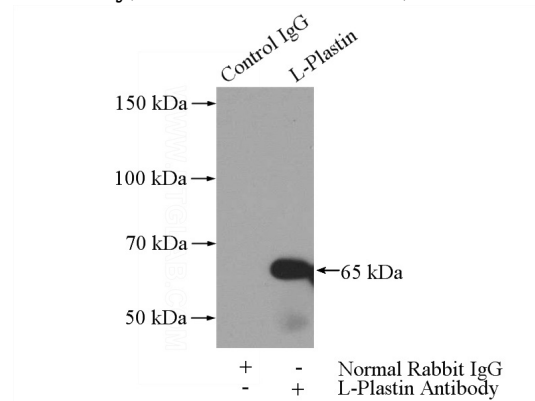
Applications

ELISA, WB, IHC, IP, FC

Dilutions

Recommended Dilution:

Immunohistochemical of paraffin-embedded human lymphoma using Catalog No:112306(LCP1 antibody) at dilution of 1:50 (under 10x lens)



L-Plastin antibody



Catalog Number: 112306

IP Result of anti-LCP1 (IP:Catalog No:112306, 4ug; Detection:Catalog No:112306 1:1000) with Jurkat cells lysate 2400ug.

1X10⁶ Raji cells were stained with 0.2ug LCP1 antibody (Catalog No:112306, red) and control antibody (blue). Fixed with 4% PFA blocked with 3% BSA (30 min). Alexa Fluor 488-conjugated AffiniPure Goat Anti-Rabbit IgG(H+L) with dilution 1:1500.

